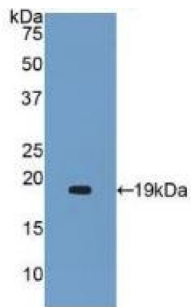


Datasheet

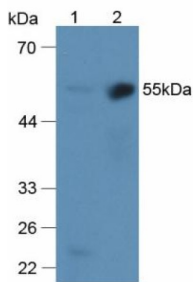
Version: 5.0.0
Revision date: 10 Feb 2025

Alpha-2 Antiplasmin (SERPINF2) Antibody

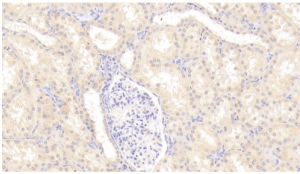
Catalogue No.: abx102505



Western blot analysis of recombinant Human a2PI protein.



Western blot analysis of (1) Mouse Liver Tissue and (2) Mouse Kidney Tissue.



IHC-P analysis of Human kidney tissue, using a2PI antibody (20 µg/ml).

Polyclonal Antibody to Alpha-2-Plasmin Inhibitor (a2PI).

Target: Alpha-2 Antiplasmin (SERPINF2)

Clonality: Polyclonal

Reactivity: Human

Tested Applications: WB, IHC, IF/ICC

Host: Rabbit

Recommended dilutions: WB: 0.01-2 µg/ml, IHC: 5-20 µg/ml, IF/ICC: 5-20 µg/ml. Optimal dilutions/concentrations should be determined by the end user.

Conjugation: Unconjugated

Datasheet

Version: 5.0.0
Revision date: 10 Feb 2025



Immunogen:	abx065260 - Recombinant a2PI (Tyr340-Lys491) expressed in E. coli
Form:	Liquid
Purification:	Purified by antigen-specific affinity chromatography, followed by Protein A affinity chromatography.
Storage:	Aliquot and store at -20°C. Avoid repeated freeze/thaw cycles.
UniProt Primary AC:	P08697 (UniProt , ExPASy)
KEGG:	hsa:5345
String:	9606.ENSP00000321853
Buffer:	PBS, pH 7.4, containing 0.02% Sodium azide, 50% glycerol.
Specificity:	Cross-reacts with Mouse and Rat a2PI.
Concentration:	0.99 mg/ml
Note:	This product is for research use only.

For Reference Only