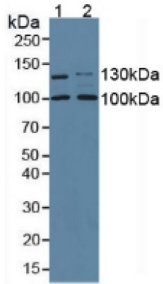
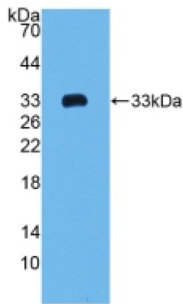


Collagen Type I Alpha 2 (COL1A2) Antibody

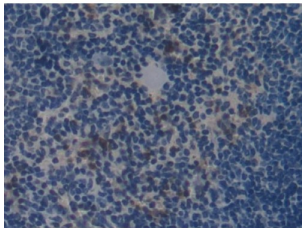
Catalogue No.: abx102530



Western blot analysis of (1) Mouse Kidney Tissue and (2) Mouse Placenta Tissue.



Western blot analysis of recombinant Mouse COL1A2.



IHC-P analysis of Mouse Spleen Tissue, with DAB staining.

Polyclonal Antibody to COL1A2 (COL1A2).

Target: Collagen Type I Alpha 2 (COL1A2)

Clonality: Polyclonal

Reactivity: Mouse

Tested Applications: WB, IHC, IF/ICC

Host: Rabbit

Recommended dilutions: WB: 0.01-2 µg/ml, IHC: 5-20 µg/ml, IF/ICC: 5-20 µg/ml. Optimal dilutions/concentrations should be determined by the end user.

Conjugation: Unconjugated

Datasheet

Version: 8.0.0
Revision date: 13 Mar 2025



Immunogen:	abx167199 - Recombinant COL1a2 (Val1109-Lys1372) expressed in E. coli
Form:	Liquid
Purification:	Purified by antigen-specific affinity chromatography, followed by Protein A affinity chromatography.
Storage:	Aliquot and store at -20°C. Avoid repeated freeze/thaw cycles.
UniProt Primary AC:	Q01149 (UniProt , ExPASy)
KEGG:	mmu:12843
String:	10090.ENSMUSP00000031668
Buffer:	0.01 M PBS, pH 7.4, containing 0.02% sodium azide, 50% glycerol.
Specificity:	Cross-reacts with Human and Rat COL1a2.
Concentration:	0.59 mg/ml
Note:	THIS PRODUCT IS FOR RESEARCH USE ONLY. NOT FOR USE IN DIAGNOSTIC, THERAPEUTIC OR COSMETIC PROCEDURES. NOT FOR HUMAN OR ANIMAL CONSUMPTION.

For Reference Only