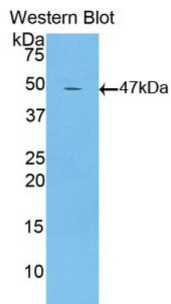
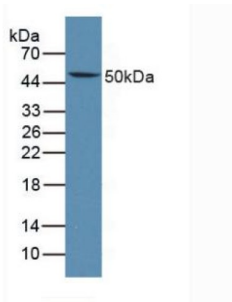


## Lymphotoxin Beta Receptor (LTbR) Antibody

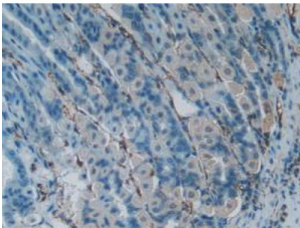
Catalogue No.: abx102568



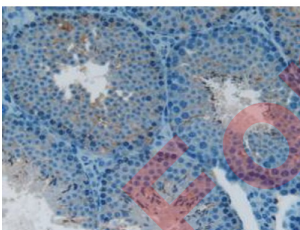
Western blot analysis of recombinant Mouse LTbR.



Western blot analysis of Mouse Thymus Tissue.



IHC-P analysis of Mouse Stomach tissue, with DAB staining.



IHC-P analysis of Mouse Testis tissue, with DAB staining.

Polyclonal Antibody to Lymphotoxin Beta Receptor (LTbR).

**Target:** Lymphotoxin Beta Receptor (LTbR)

**Clonality:** Polyclonal

**Reactivity:** Mouse

# Datasheet

Version: 3.0.0  
Revision date: 06 Mar 2025



<b>Tested Applications:</b>	WB, IHC, IF/ICC
<b>Host:</b>	Rabbit
<b>Recommended dilutions:</b>	WB: 0.01-2 µg/ml, IHC: 5-20 µg/ml, IF/ICC: 5-20 µg/ml. Optimal dilutions/concentrations should be determined by the end user.
<b>Conjugation:</b>	Unconjugated
<b>Immunogen:</b>	<a href="#">abx067856</a> - Recombinant LTbR (Pro128-Tyr395) expressed in E. coli.
<b>Form:</b>	Liquid
<b>Purification:</b>	Purified by antigen-specific affinity chromatography, followed by Protein A affinity chromatography.
<b>Storage:</b>	Aliquot and store at -20°C. Avoid repeated freeze/thaw cycles.
<b>Buffer:</b>	0.01 M PBS, pH 7.4, containing 0.05% Proclin-300, 50% glycerol.
<b>Concentration:</b>	0.68 mg/ml
<b>Note:</b>	THIS PRODUCT IS FOR RESEARCH USE ONLY. NOT FOR USE IN DIAGNOSTIC, THERAPEUTIC OR COSMETIC PROCEDURES. NOT FOR HUMAN OR ANIMAL CONSUMPTION.

For Reference Only