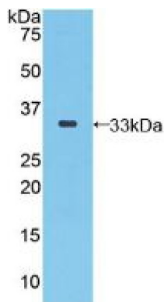
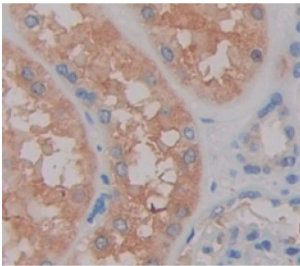


Selenoprotein P / SEPP1 (SELENOP) Antibody

Catalogue No.: abx102574



Western blot analysis of recombinant Human SEPP1.



IHC-P analysis of Human tissue, with DAB staining.

Polyclonal Antibody to Selenoprotein P / SEPP1 (SELENOP).

Target:	Selenoprotein P / SEPP1 (SELENOP)
Clonality:	Polyclonal
Reactivity:	Human
Tested Applications:	WB, IHC, IF/ICC
Host:	Rabbit
Recommended dilutions:	WB: 0.5-2 µg/ml, IHC: 5-20 µg/ml, IF/ICC: 5-20 µg/ml. Optimal dilutions/concentrations should be determined by the end user.
Conjugation:	Unconjugated
Immunogen:	abx069016 - Recombinant SEPP1 (Tyr60-Lys274) expressed in E. coli
Form:	Liquid
Purification:	Purified by antigen-specific affinity chromatography, followed by Protein A affinity chromatography.
Storage:	Aliquot and store at -20°C. Avoid repeated freeze/thaw cycles.

Datasheet

Version: 3.0.0
Revision date: 08 Nov 2024



UniProt Primary AC: P49908 ([UniProt](#), [ExPASy](#))

Gene Symbol: SELENOP

GeneID: [6414](#)

OMIM: [601484](#)

KEGG: hsa:6414

String: [9606.ENSP00000420939](#)

Buffer: 0.01 M PBS, pH 7.4, containing 0.05% Proclin-300, 50% glycerol.

Concentration: 0.24 mg/ml

Note: This product is for research use only.

For Reference Only