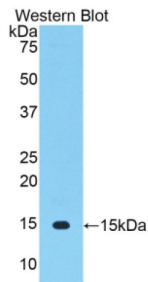
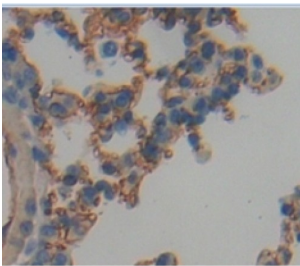


Thy-1 Membrane Glycoprotein (THY1) Antibody

Catalogue No.: abx102578



Western blot analysis of the recombinant protein.



IHC-P analysis of Mouse Tissue, with DAB staining.

Polyclonal Antibody to THY1 Cell Surface Antigen (THY1).

Target:	Thy-1 Membrane Glycoprotein (THY1)
Clonality:	Polyclonal
Reactivity:	Mouse
Tested Applications:	WB, IHC, IF/ICC
Host:	Rabbit
Recommended dilutions:	WB: 0.01-2 µg/ml, IHC: 5-20 µg/ml, IF/ICC: 5-20 µg/ml. Optimal dilutions/concentrations should be determined by the end user.
Conjugation:	Unconjugated
Immunogen:	Thy1 (Gln20-Cys131)
Form:	Liquid
Purification:	Purified by antigen-specific affinity chromatography, followed by Protein A affinity chromatography.
Storage:	Aliquot and store at -20°C. Avoid repeated freeze/thaw cycles.

Datasheet

Version: 2.0.0
Revision date: 02 Feb 2025



UniProt Primary AC: P01831 ([UniProt](#), [ExPASy](#))

KEGG: mmu:21838

String: [10090.ENSMUSP00000110489](#)

Buffer: 0.01 M PBS, pH 7.4, containing 0.05% Proclin-300, 50% glycerol.

Note: This product is for research use only.

For Reference Only