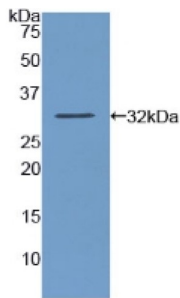


Datasheet

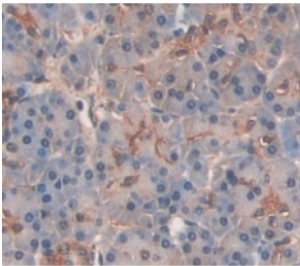
Version: 2.0.0
Revision date: 25 Nov 2024

Amylase Alpha 2, Pancreatic (AMY2) Antibody

Catalogue No.: abx102706



Western blot analysis of recombinant Human AMY2.



IHC-P analysis of Human Tissue, with DAB staining.

Polyclonal Antibody to Amylase Alpha 2, Pancreatic (AMY2).

Target:	Amylase Alpha 2, Pancreatic (AMY2)
Clonality:	Polyclonal
Reactivity:	Human
Tested Applications:	WB, IHC, IF/ICC
Host:	Rabbit
Recommended dilutions:	WB: 0.5-2 µg/ml, IHC: 5-20 µg/ml, IF/ICC: 5-20 µg/ml. Optimal dilutions/concentrations should be determined by the end user.
Conjugation:	Unconjugated
Immunogen:	AMY2 (Asp188-Val432)
Form:	Liquid
Purification:	Purified by antigen-specific affinity chromatography, followed by Protein A affinity chromatography.
Storage:	Aliquot and store at -20°C. Avoid repeated freeze/thaw cycles.

Datasheet

Version: 2.0.0

Revision date: 25 Nov 2024

UniProt Primary AC: P04746 ([UniProt](#), [ExPASy](#))

KEGG: hsa:279

String: [9606.ENSP00000481450](#)

Buffer: 0.01 M PBS, pH 7.4, containing 0.05% Proclin-300, 50% glycerol.

Note: This product is for research use only.

For Reference Only