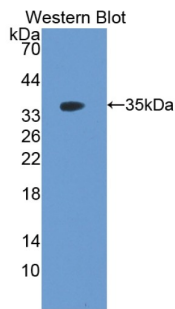
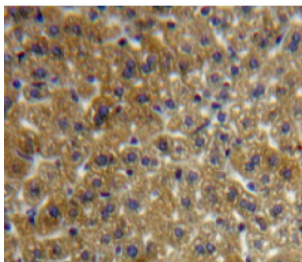


Follistatin Like Protein 1 (FSTL1) Antibody

Catalogue No.: abx102738



Western blot analysis of the recombinant protein.



IHC-P analysis of liver tissue, with DAB staining.

Polyclonal Antibody to Follistatin Like Protein 1 (FSTL1).

Target:	Follistatin Like Protein 1 (FSTL1)
Clonality:	Polyclonal
Reactivity:	Rat
Tested Applications:	WB, IHC, IF/ICC
Host:	Rabbit
Recommended dilutions:	WB: 0.01-2 µg/ml, IHC: 5-20 µg/ml, IF/ICC: 5-20 µg/ml. Optimal dilutions/concentrations should be determined by the end user.
Conjugation:	Unconjugated
Immunogen:	FSTL1 (Glu20-Ile306)
Form:	Liquid
Purification:	Purified by antigen-specific affinity chromatography, followed by Protein A affinity chromatography.
Storage:	Aliquot and store at -20°C. Avoid repeated freeze/thaw cycles.

Datasheet

Version: 3.0.0
Revision date: 20 Jan 2025



UniProt Primary AC: Q62632 ([UniProt](#), [ExPASy](#))

KEGG: rno:79210

String: [10116.ENSRNOP00000003721](#)

Buffer: 0.01 M PBS, pH 7.4, containing 0.05% Proclin-300, 50% glycerol.

Note: This product is for research use only.

For Reference Only