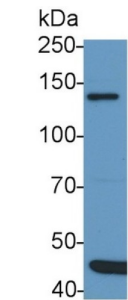
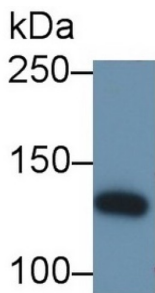


Insulin Receptor Substrate 1 (IRS1) Antibody

Catalogue No.: abx102890



Western blot analysis of Rat Cerebrum lysate, using Rabbit Anti-Mouse IRS1 Antibody (2 µg/ml) and HRP-conjugated Goat Anti-Rabbit antibody ([abx400043](#), 0.2 µg/ml).



Western blot analysis of Cow Cerebrum lysate, using Rabbit Anti-Mouse IRS1 Antibody (2 µg/ml) and HRP-conjugated Goat Anti-Rabbit antibody ([abx400043](#), 0.2 µg/ml).

Polyclonal Antibody to Insulin Receptor Substrate 1 (IRS1).

Target:	Insulin Receptor Substrate 1 (IRS1)
Clonality:	Polyclonal
Reactivity:	Mouse
Tested Applications:	WB, IHC, IF/ICC
Host:	Rabbit
Recommended dilutions:	WB: 0.2-2 µg/ml, IHC: 5-20 µg/ml, IF/ICC: 5-20 µg/ml. Optimal dilutions/concentrations should be determined by the end user.
Conjugation:	Unconjugated
Immunogen:	abx067268 - Recombinant IRS1 (Pro837-Gln1089) expressed in E. coli
Form:	Liquid
Purification:	Purified by antigen-specific affinity chromatography, followed by Protein A affinity chromatography.
Storage:	Aliquot and store at -20°C. Avoid repeated freeze/thaw cycles.

Datasheet

Version: 6.0.0
Revision date: 31 Dec 2024



UniProt Primary AC: P35569 ([UniProt](#), [ExPASy](#))

KEGG: mmu:16367

String: [10090.ENSMUSP00000063795](#)

Buffer: 0.01 M PBS, pH 7.4, containing 0.02% Sodium azide, 50% glycerol.

Specificity: Cross-reacts with Rat and Cow IRS1.

Concentration: 1 mg/ml

Note: This product is for research use only.

For Reference Only