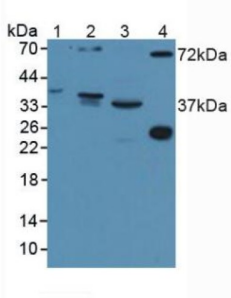
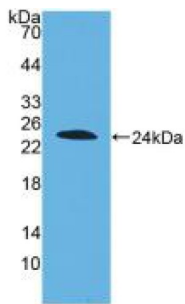


Disrupted In Schizophrenia 1 (DISC1) Antibody

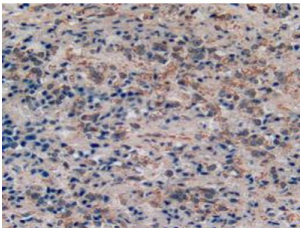
Catalogue No.: abx102996



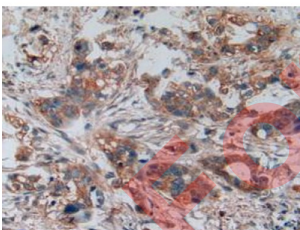
Western blot analysis of (1) Human Serum, (2) Mouse Brain Tissue, (3) Mouse Kidney Tissue and (4) Rat Serum.



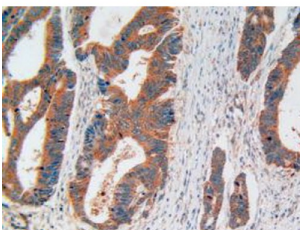
Western blot analysis of recombinant Human DISC1.



IHC-P analysis of Human Prostate Gland Cancer Tissue, with DAB staining.



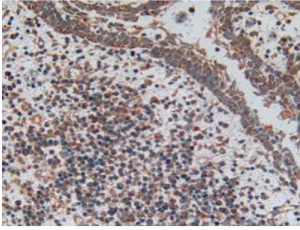
IHC-P analysis of Human Pancreas Cancer Tissue, with DAB staining.



IHC-P analysis of Human Rectum Cancer Tissue, with DAB staining.

Datasheet

Version: 2.0.0
Revision date: 15 Sep 2024



IHC-P analysis of Human Skin Cancer Tissue, with DAB staining.

Polyclonal Antibody to Disrupted In Schizophrenia 1 (DISC1).

Target:	Disrupted In Schizophrenia 1 (DISC1)
Clonality:	Polyclonal
Reactivity:	Human
Tested Applications:	WB, IHC, IF/ICC
Host:	Rabbit
Recommended dilutions:	WB: 0.5-5 µg/ml, IHC: 5-20 µg/ml, IF/ICC: 5-20 µg/ml. Optimal dilutions/concentrations should be determined by the end user.
Conjugation:	Unconjugated
Immunogen:	DISC1 (Ser102-Cys261)
Form:	Liquid
Purification:	Purified by antigen-specific affinity chromatography, followed by Protein A affinity chromatography.
Storage:	Aliquot and store at -20°C. Avoid repeated freeze/thaw cycles.
Buffer:	0.01 M PBS, pH 7.4, containing 0.05% Proclin-300, 50% glycerol.
Note:	This product is for research use only.