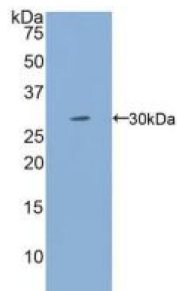
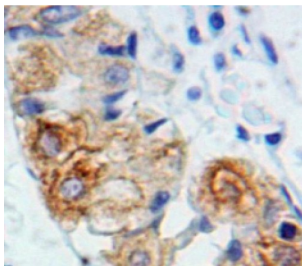


## Interleukin 2 Receptor, Gamma (IL2RG) Antibody

Catalogue No.: abx103026



Western blot analysis of recombinant Human IL2Rg.



IHC-P analysis of Stomach tissue, with DAB staining.

Polyclonal Antibody to Interleukin 2 Receptor Gamma (IL2Rg).

**Target:** Interleukin 2 Receptor, Gamma (IL2RG)**Clonality:** Polyclonal**Reactivity:** Human**Tested Applications:** WB, IHC, IF/ICC**Host:** Rabbit**Recommended dilutions:** WB: 0.01-2 µg/ml, IHC: 5-20 µg/ml, IF/ICC: 5-20 µg/ml. Optimal dilutions/concentrations should be determined by the end user.**Conjugation:** Unconjugated**Immunogen:** IL2Rg (Leu23-Ala262)**Form:** Liquid**Purification:** Purified by antigen-specific affinity chromatography, followed by Protein A affinity chromatography.**Storage:** Aliquot and store at -20°C. Avoid repeated freeze/thaw cycles.

# Datasheet

Version: 3.0.0

Revision date: 13 Mar 2025



**UniProt Primary AC:** P31785 ([UniProt](#), [ExPASy](#))

**KEGG:** hsa:3561

**String:** [9606.ENSP00000363318](#)

**Buffer:** 0.01 M PBS, pH 7.4, containing 0.05% Proclin-300, 50% glycerol.

**Note:** THIS PRODUCT IS FOR RESEARCH USE ONLY. NOT FOR USE IN DIAGNOSTIC, THERAPEUTIC OR COSMETIC PROCEDURES. NOT FOR HUMAN OR ANIMAL CONSUMPTION.

For Reference Only