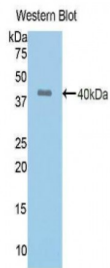
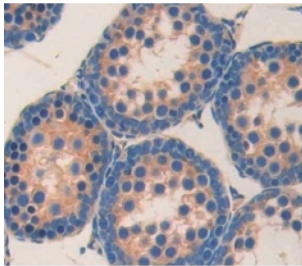


Angiotensin I Converting Enzyme (ACE) Antibody

Catalogue No.: abx103104



Western blot analysis of the recombinant protein.



IHC-P analysis of Mouse Tissue, with DAB staining.

Polyclonal Antibody to ACE (ACE).

Target: Angiotensin I Converting Enzyme (ACE)

Clonality: Polyclonal

Reactivity: Mouse

Tested Applications: WB, IHC, IF/ICC

Host: Rabbit

Recommended dilutions: WB: 0.5-2 µg/ml, IHC: 5-20 µg/ml, IF/ICC: 5-20 µg/ml. Optimal dilutions/concentrations should be determined by the end user.

Conjugation: Unconjugated

Immunogen: ACE (Tyr504-Asp597)

Form: Liquid

Purification: Purified by antigen-specific affinity chromatography, followed by Protein A affinity chromatography.

Storage: Aliquot and store at -20°C. Avoid repeated freeze/thaw cycles.

Datasheet

Version: 2.0.0
Revision date: 03 Apr 2022



UniProt Primary AC: P09470 ([UniProt](#), [ExPASy](#))

KEGG: mmu:11421

String: [10090.ENSMUSP00000001963](#)

Buffer: 0.01 M PBS, pH 7.4, containing 0.05% Proclin-300, 50% glycerol.

Note: This product is for research use only.

For Reference Only