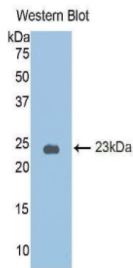
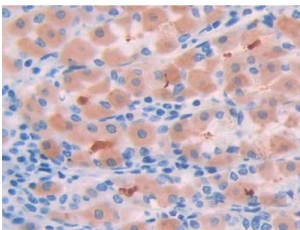


## Corticosteroid Binding Globulin (SERPINA6) Antibody

Catalogue No.: abx103121



Western blot analysis of the recombinant protein.



IHC-P analysis of Human Stomach cancer Tissue, with DAB staining.

Polyclonal Antibody to Corticosteroid Binding Globulin (Corticosteroid Binding Globulin (SERPINA6)) (Corticosteroid Binding Globulin (SERPINA6)).

**Target:** Corticosteroid Binding Globulin (SERPINA6)

**Clonality:** Polyclonal

**Reactivity:** Human

**Tested Applications:** WB, IHC, IF/ICC

**Host:** Rabbit

**Recommended dilutions:** WB: 0.01-2 µg/ml, IHC: 5-20 µg/ml, IF/ICC: 5-20 µg/ml. Optimal dilutions/concentrations should be determined by the end user.

**Conjugation:** Unconjugated

**Immunogen:** Human CBG (Pro25-Leu195)

**Form:** Liquid

**Purification:** Purified by antigen-specific affinity chromatography, followed by Protein A affinity chromatography.

# Datasheet

Version: 3.0.0

Revision date: 15 Jan 2025



**Storage:** Aliquot and store at -20°C. Avoid repeated freeze/thaw cycles.

**UniProt Primary AC:** P08185 ([UniProt](#), [ExPASy](#))

**KEGG:** hsa:866

**String:** [9606.ENSP00000342850](#)

**Buffer:** 0.01 M PBS, pH 7.4, containing 0.05% Proclin-300, 50% glycerol.

**Note:** This product is for research use only.

For Reference Only