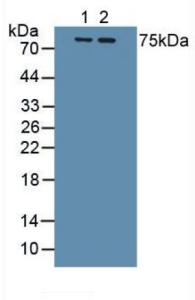
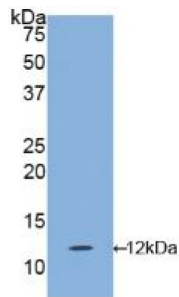


Interleukin 1 Receptor Type I (IL1R1) Antibody

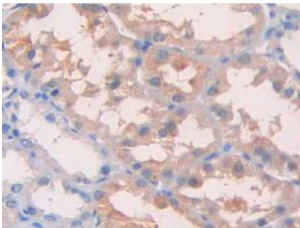
Catalogue No.: abx103166



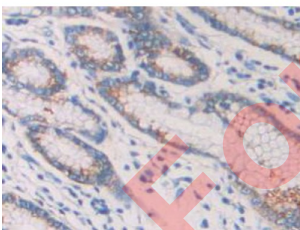
Western blot analysis of (1) Human Lung Tissue and (2) Human A549 Cells.



Western blot analysis of recombinant Human IL1R1.



IHC-P analysis of Human Kidney Tissue, with DAB staining.



IHC-P analysis of Human Stomach Tissue, with DAB staining.

Polyclonal Antibody to Interleukin 1 Receptor Type I (IL1R1).

Target: Interleukin 1 Receptor Type I (IL1R1)

Clonality: Polyclonal

Reactivity: Human

Datasheet

Version: 3.0.0
Revision date: 13 Mar 2025



Tested Applications:	WB, IHC, IF/ICC
Host:	Rabbit
Recommended dilutions:	WB: 1-5 µg/ml, IHC: 5-20 µg/ml, IF/ICC: 5-20 µg/ml. Optimal dilutions/concentrations should be determined by the end user.
Conjugation:	Unconjugated
Immunogen:	IL1R1 (Leu120-Pro208)
Form:	Liquid
Purification:	Purified by antigen-specific affinity chromatography, followed by Protein A affinity chromatography.
Storage:	Aliquot and store at -20°C. Avoid repeated freeze/thaw cycles.
UniProt Primary AC:	P14778 (UniProt , ExPASy)
KEGG:	hsa:3554
String:	9606.ENSP00000386380
Buffer:	0.01 M PBS, pH 7.4, containing 0.05% Proclin-300, 50% glycerol.
Note:	THIS PRODUCT IS FOR RESEARCH USE ONLY. NOT FOR USE IN DIAGNOSTIC, THERAPEUTIC OR COSMETIC PROCEDURES. NOT FOR HUMAN OR ANIMAL CONSUMPTION.

For Reference Only