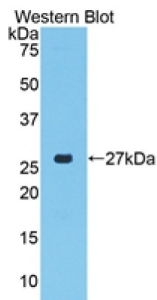


Datasheet

Version: 1.0.0
Revision date: 27 Nov 2024

Connective Tissue Growth Factor (CCN2) Antibody

Catalogue No.: abx103230



Western blot analysis of the recombinant protein.

Polyclonal Antibody to Connective Tissue Growth Factor (CCN2).

| | |
|-------------------------------|------------------------------------------------------------------------------------------------------------------------------|
| Target: | Connective Tissue Growth Factor (CCN2) |
| Clonality: | Polyclonal |
| Reactivity: | Pig |
| Tested Applications: | WB, IHC, IF/ICC |
| Host: | Rabbit |
| Recommended dilutions: | WB: 0.5-2 µg/ml, IHC: 5-20 µg/ml, IF/ICC: 5-20 µg/ml. Optimal dilutions/concentrations should be determined by the end user. |
| Conjugation: | Unconjugated |
| Immunogen: | CTGF (Ala101-Pro330) |
| Form: | Liquid |
| Purification: | Purified by antigen-specific affinity chromatography, followed by Protein A affinity chromatography. |
| Storage: | Aliquot and store at -20°C. Avoid repeated freeze/thaw cycles. |
| UniProt Primary AC: | O19113 (UniProt , ExpASY) |
| String: | 9823.ENSSSCP00000004525 |
| Buffer: | 0.01 M PBS, pH 7.4, containing 0.05% Proclin-300, 50% glycerol. |
| Note: | This product is for research use only. |