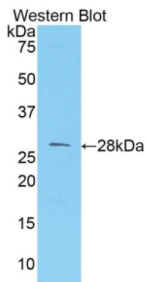
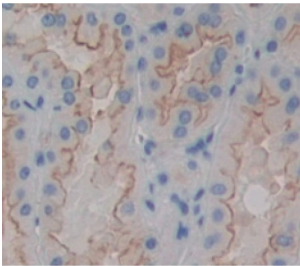


Melanoma Cell Adhesion Molecule (MCAM) Antibody

Catalogue No.: abx103286



Western blot analysis of the recombinant protein.



IHC-P analysis of Human Tissue, with DAB staining.

Polyclonal Antibody to Melanoma Cell Adhesion Molecule (MCAM).

Target:	Melanoma Cell Adhesion Molecule (MCAM)
Clonality:	Polyclonal
Reactivity:	Human
Tested Applications:	WB, IHC, IF/ICC
Host:	Rabbit
Recommended dilutions:	WB: 0.01-2 µg/ml, IHC: 5-20 µg/ml, IF/ICC: 5-20 µg/ml. Optimal dilutions/concentrations should be determined by the end user.
Conjugation:	Unconjugated
Immunogen:	MCAM (Asp324-Val565)
Form:	Liquid
Purification:	Purified by antigen-specific affinity chromatography, followed by Protein A affinity chromatography.
Storage:	Aliquot and store at -20°C. Avoid repeated freeze/thaw cycles.

Datasheet

Version: 1.0.0

Revision date: 11 Feb 2025



UniProt Primary AC: P43121 ([UniProt](#), [ExPASy](#))

KEGG: hsa:4162

String: [9606.ENSP00000264036](#)

Buffer: 0.01 M PBS, pH 7.4, containing 0.05% Proclin-300, 50% glycerol.

Note: This product is for research use only.

For Reference Only