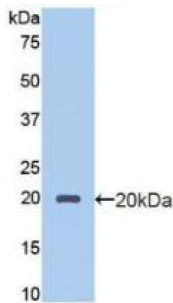


Datasheet

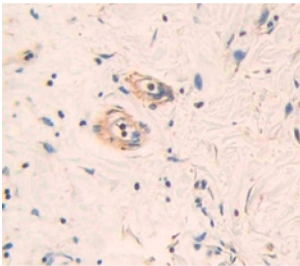
Version: 4.0.0
Revision date: 23 Feb 2025

Protein C Receptor, Endothelial (PROCR) Antibody

Catalogue No.: abx103365



Western blot analysis of recombinant Human PROCR.



IHC-P analysis of Human Tissue, with DAB staining.

Polyclonal Antibody to Protein C Receptor, Endothelial (PROCR).

Target:	Protein C Receptor, Endothelial (PROCR)
Clonality:	Polyclonal
Reactivity:	Human
Tested Applications:	WB, IHC, IF/ICC
Host:	Rabbit
Recommended dilutions:	WB: 1-5 µg/ml, IHC: 5-20 µg/ml, IF/ICC: 5-20 µg/ml. Optimal dilutions/concentrations should be determined by the end user.
Conjugation:	Unconjugated
Immunogen:	PROCR (Thr63-Ser205)
Form:	Liquid
Purification:	Purified by antigen-specific affinity chromatography, followed by Protein A affinity chromatography.
Storage:	Aliquot and store at -20°C. Avoid repeated freeze/thaw cycles.

Datasheet

Version: 4.0.0

Revision date: 23 Feb 2025



UniProt Primary AC: Q9UNN8 ([UniProt](#), [ExPASy](#))

String: [9606.ENSP00000216968](#)

Buffer: 0.01 M PBS, pH 7.4, containing 0.05% Proclin-300, 50% glycerol.

Note: This product is for research use only.

For Reference Only