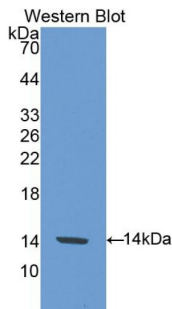
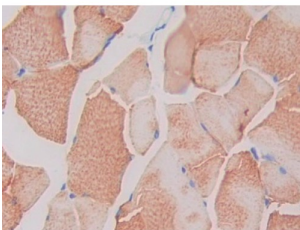


Single Ig IL1 Related Receptor (SIGIRR) Antibody

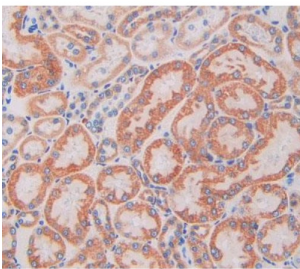
Catalogue No.: abx103370



Western blot analysis of the recombinant protein.



IHC-P analysis of Rat Skeletal muscle Tissue, with DAB staining.



IHC-P analysis of kidney tissue, with DAB staining.

Polyclonal Antibody to Single Ig IL1 Related Receptor (SIGIRR).

Target: Single Ig IL1 Related Receptor (SIGIRR)

Clonality: Polyclonal

Reactivity: Rat

Tested Applications: WB, IHC, IF/ICC

Host: Rabbit

Recommended dilutions: WB: 0.01-2 µg/ml, IHC: 5-20 µg/ml, IF/ICC: 5-20 µg/ml. Optimal dilutions/concentrations should be determined by the end user.

Conjugation: Unconjugated

Datasheet

Version: 3.0.0

Revision date: 12 Mar 2025



| | |
|-----------------------|--|
| Immunogen: | SIGIRR (Met1-Val118) |
| Form: | Liquid |
| Purification: | Purified by antigen-specific affinity chromatography, followed by Protein A affinity chromatography. |
| Storage: | Aliquot and store at -20°C. Avoid repeated freeze/thaw cycles. |
| Buffer: | 0.01 M PBS, pH 7.4, containing 0.05% Proclin-300, 50% glycerol. |
| Concentration: | 1 mg/ml |
| Note: | THIS PRODUCT IS FOR RESEARCH USE ONLY. NOT FOR USE IN DIAGNOSTIC, THERAPEUTIC OR COSMETIC PROCEDURES. NOT FOR HUMAN OR ANIMAL CONSUMPTION. |

For Reference Only