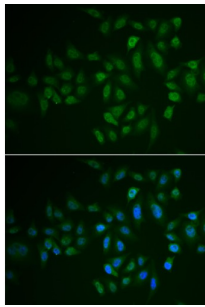


Myosin Light Chain Kinase 3 (MYLK3) Antibody

Catalogue No.: abx005109



Immunofluorescence analysis of U2OS cells using MYLK3 Antibody

MYLK3 Antibody is a Rabbit Polyclonal antibody against MYLK3. Phosphorylation of cardiac myosin heavy chains (see MYH7B, MIM 609928) and light chains (see MYL2, MIM 160781) by a kinase, such as MYLK3, potentiates the force and rate of cross-bridge recruitment in cardiac myocytes (Chan et al., 2008).

Target:	Myosin Light Chain Kinase 3 (MYLK3)
Clonality:	Polyclonal
Reactivity:	Human, Mouse
Tested Applications:	IF/ICC
Host:	Rabbit
Recommended dilutions:	IF/ICC: 1/50 - 1/100. Optimal dilutions/concentrations should be determined by the end user.
Conjugation:	Unconjugated
Immunogen:	Recombinant fusion protein corresponding to human MYLK3
Isotype:	IgG
Form:	Liquid
Purification:	Purified by affinity chromatography.
Storage:	Aliquot and store at -20°C. Avoid repeated freeze/thaw cycles.
UniProt Primary AC:	Q32MK0 (UniProt , ExPASy)
Gene Symbol:	MYLK3

Datasheet

Version: 3.0.0
Revision date: 13 Mar 2025



GeneID: [91807](#)

OMIM: [612147](#)

NCBI Accession: NP_872299.2

HGNC: 29826

KEGG: hsa:91807

Ensembl: ENSG00000140795

Buffer: PBS, pH 7.3, containing 0.02% sodium azide, 50% glycerol.

Concentration: 1 mg/ml

Note: THIS PRODUCT IS FOR RESEARCH USE ONLY. NOT FOR USE IN DIAGNOSTIC, THERAPEUTIC OR COSMETIC PROCEDURES. NOT FOR HUMAN OR ANIMAL CONSUMPTION.

For Reference Only