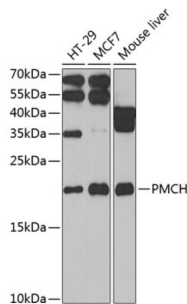


Pro-MCH (PMCH) Antibody

Catalogue No.: abx005132



Western blot analysis of extracts of various cell lines using PMCH Antibody (1/1000 dilution).

PMCH Antibody is a Rabbit Polyclonal antibody against PMCH. The melanin-concentrating hormone (MCH) is a cyclic neuropeptide isolated initially from salmon pituitary gland and later from rat hypothalamus. In mammals, MCH perikarya are confined largely to the lateral hypothalamus and zona incerta area with extensive neuronal projections throughout the brain, including the neurohypophysis. The anatomic distribution suggests a neurotransmitter or neuromodulator role for MCH in a broad array of neuronal functions directed toward the regulation of goal-directed behavior, such as food intake, and general arousal. MCH and 2 other putative neuropeptides, NEI and NGE, are encoded by the same precursor and appear colocalized in nerve cells and in many instances within the projections. The precursor is designated pro-melanin-concentrating hormone (PMCH) (summary by Nahon et al., 1992).

Target:	Pro-MCH (PMCH)
Clonality:	Polyclonal
Reactivity:	Human, Mouse
Tested Applications:	WB
Host:	Rabbit
Recommended dilutions:	WB: 1/500 - 1/2000. Optimal dilutions/concentrations should be determined by the end user.
Conjugation:	Unconjugated
Immunogen:	Recombinant fusion protein corresponding to human PMCH
Isotype:	IgG
Form:	Liquid
Purification:	Purified by affinity chromatography.
Storage:	Aliquot and store at -20°C. Avoid repeated freeze/thaw cycles.

Datasheet

Version: 4.0.0
Revision date: 31 Jan 2025

UniProt Primary AC:	P20382 (UniProt , ExPASy)
Gene Symbol:	PMCH
GeneID:	5367
NCBI Accession:	NP_002665.2
KEGG:	hsa:5367
String:	9606.ENSP00000332225
Molecular Weight:	Calculated MW: 18 kDa Observed MW: 19 kDa
Buffer:	PBS, pH 7.3, containing 0.02% sodium azide, 50% glycerol.
Concentration:	1 mg/ml
Note:	This product is for research use only.

For Reference Only