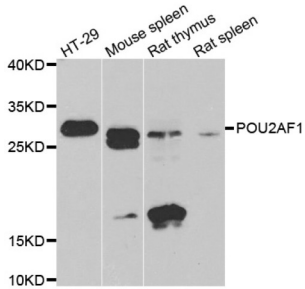
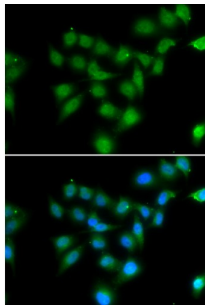


## POU Class 2 Associating Factor 1 (POU2AF1) Antibody

Catalogue No.: abx005135



Western blot analysis of extracts of various cell lines, using POU2AF1 antibody (abx005135) at 1/1000 dilution.



Immunofluorescence analysis of HeLa cells using POU2AF1 antibody (abx005135). Blue: DAPI for nuclear staining.

POU2AF1 Antibody is a Rabbit Polyclonal antibody against POU2AF1.

<b>Target:</b>	POU Class 2 Associating Factor 1 (POU2AF1)
<b>Clonality:</b>	Polyclonal
<b>Reactivity:</b>	Human, Mouse, Rat
<b>Tested Applications:</b>	WB
<b>Host:</b>	Rabbit
<b>Recommended dilutions:</b>	WB: 1/500 - 1/2000. Optimal dilutions/concentrations should be determined by the end user.
<b>Conjugation:</b>	Unconjugated
<b>Immunogen:</b>	Recombinant fusion protein containing a sequence corresponding to amino acids 1-256 of human POU2AF1.
<b>Isotype:</b>	IgG
<b>Form:</b>	Liquid
<b>Purification:</b>	Purified by affinity chromatography.

# Datasheet

Version: 7.0.0  
Revision date: 05 Dec 2024



**Storage:** Aliquot and store at -20°C. Avoid repeated freeze/thaw cycles.

**UniProt Primary AC:** Q16633 ([UniProt](#), [ExPASy](#))

**Gene Symbol:** POU2AF1

**GeneID:** [5450](#)

**NCBI Accession:** NP\_006226.2

**KEGG:** hsa:5450

**String:** [9606.ENSP00000376786](#)

**Molecular Weight:** Calculated MW: 27 kDa  
Observed MW: 35 kDa

**Buffer:** PBS, pH 7.3, containing 0.02% sodium azide, 50% glycerol.

**Concentration:** > 0.2 mg/ml

**Note:** This product is for research use only.

For Reference Only