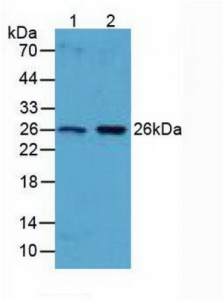
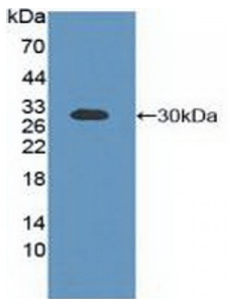


B-Cell CLL/Lymphoma 2 Like Protein (Bcl2L) Antibody

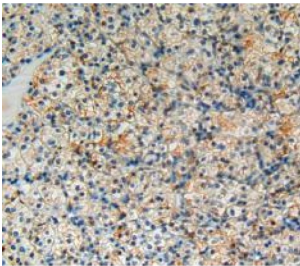
Catalogue No.: abx103686



Western blot analysis of (1) Human Liver Tissue and (2) Human Lung Tissue.



Western blot analysis of recombinant Human Bcl2L.



IHC-P analysis of kidney cancer tissue, with DAB staining.

Polyclonal Antibody to B-Cell CLL/Lymphoma 2 Like Protein (Bcl2L).

Target: B-Cell CLL/Lymphoma 2 Like Protein (Bcl2L)

Clonality: Polyclonal

Reactivity: Human

Tested Applications: WB, IHC, IF/ICC

Host: Rabbit

Recommended dilutions: WB: 0.5-2 µg/ml, IHC: 5-20 µg/ml, IF/ICC: 5-20 µg/ml. Optimal dilutions/concentrations should be determined by the end user.

Conjugation: Unconjugated

Datasheet

Version: 1.0.0

Revision date: 01 Nov 2023



Immunogen:	Bcl2L (Ser2-Arg212)
Form:	Liquid
Purification:	Purified by antigen-specific affinity chromatography, followed by Protein A affinity chromatography.
Storage:	Aliquot and store at -20°C. Avoid repeated freeze/thaw cycles.
Buffer:	0.01 M PBS, pH 7.4, containing 0.05% Proclin-300, 50% glycerol.
Note:	This product is for research use only.

For Reference Only