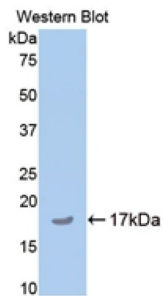
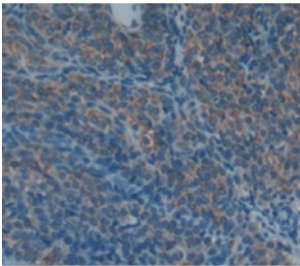


## Cartilage Oligomeric Matrix Protein (COMP) Antibody

Catalogue No.: abx103697



Western blot analysis of the recombinant protein.



IHC-P analysis of Rat Tissue, with DAB staining.

Polyclonal Antibody to Cartilage Oligomeric Matrix Protein (COMP).

**Target:** Cartilage Oligomeric Matrix Protein (COMP)

**Clonality:** Polyclonal

**Reactivity:** Rat

**Tested Applications:** WB, IHC, IF/ICC

**Host:** Rabbit

**Recommended dilutions:** WB: 0.5-2 µg/ml, IHC: 5-20 µg/ml, IF/ICC: 5-20 µg/ml. Optimal dilutions/concentrations should be determined by the end user.

**Conjugation:** Unconjugated

**Immunogen:** COMP (Arg35-Ile179)

**Form:** Liquid

**Purification:** Purified by antigen-specific affinity chromatography, followed by Protein A affinity chromatography.

**Storage:** Aliquot and store at -20°C. Avoid repeated freeze/thaw cycles.

# Datasheet

Version: 2.0.0  
Revision date: 27 Dec 2024



**UniProt Primary AC:** P35444 ([UniProt](#), [ExPASy](#))

**KEGG:** rno:25304

**String:** [10116.ENSRNOP00000067037](#)

**Buffer:** 0.01 M PBS, pH 7.4, containing 0.05% Proclin-300, 50% glycerol.

**Note:** This product is for research use only.

For Reference Only