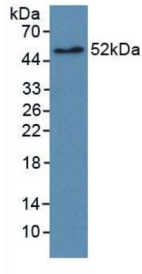


## Receptor Tyrosine-Protein Kinase ErbB-2 (ERBB2) Antibody

Catalogue No.: abx103703



Western blot analysis of recombinant Human EGFR2.

Receptor Tyrosine-Protein Kinase ErbB-2 (ERBB2) Antibody is a Mouse Monoclonal Antibody against Receptor Tyrosine-Protein Kinase ErbB-2 (ERBB2).

<b>Target:</b>	Receptor Tyrosine-Protein Kinase ErbB-2 (ERBB2)
<b>Clonality:</b>	Monoclonal
<b>Reactivity:</b>	Human
<b>Tested Applications:</b>	WB, IHC, IF/ICC
<b>Host:</b>	Mouse
<b>Recommended dilutions:</b>	WB: 0.5-2 µg/ml, IHC: 5-20 µg/ml, IF/ICC: 5-20 µg/ml. Optimal dilutions/concentrations should be determined by the end user.
<b>Conjugation:</b>	Unconjugated
<b>Immunogen:</b>	Recombinant Epidermal Growth Factor Receptor 2 (EGFR2) (Phe376-Gly578) expressed in E. coli.
<b>Isotype:</b>	IgG
<b>Form:</b>	Liquid
<b>Purification:</b>	Purified by Protein A and Protein G affinity chromatography.
<b>Storage:</b>	Aliquot and store at -20°C. Avoid repeated freeze/thaw cycles.
<b>UniProt Primary AC:</b>	P04626 ( <a href="#">UniProt</a> , <a href="#">ExpASY</a> )
<b>KEGG:</b>	hsa:2064

# Datasheet

Version: 2.0.0  
Revision date: 12 Dec 2024



**String:** [9606.ENSF00000269571](#)

**Buffer:** 0.01 M PBS, pH 7.4, containing 0.05% Proclin-300, 50% glycerol.

**Note:** This product is for research use only.

For Reference Only