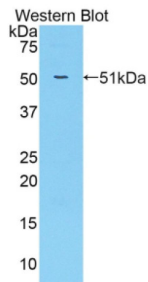
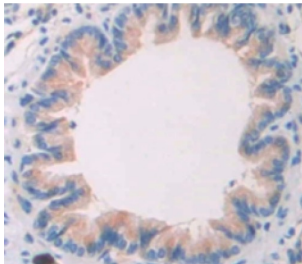


Receptor Tyrosine-Protein Kinase ErbB-2 (ERBB2) Antibody

Catalogue No.: abx103704



Western blot analysis of the recombinant protein.



IHC-P analysis of Rat Tissue, with DAB staining.

Receptor Tyrosine-Protein Kinase ErbB-2 (ERBB2) Antibody is a rabbit polyclonal antibody against Receptor Tyrosine-Protein Kinase ErbB-2 (ERBB2).

Target: Receptor Tyrosine-Protein Kinase ErbB-2 (ERBB2)

Clonality: Polyclonal

Reactivity: Rat

Tested Applications: WB, IHC, IF/ICC

Host: Rabbit

Recommended dilutions: WB: 0.01-2 µg/ml, IHC: 5-20 µg/ml, IF/ICC: 5-20 µg/ml. Optimal dilutions/concentrations should be determined by the end user.

Conjugation: Unconjugated

Immunogen: EGFR2 (Phe380-Gly582)

Form: Liquid

Purification: Purified by antigen-specific affinity chromatography, followed by Protein A affinity chromatography.

Datasheet

Version: 1.0.0

Revision date: 02 Mar 2025



Storage: Aliquot and store at -20°C. Avoid repeated freeze/thaw cycles.

UniProt Primary AC: Q8K3F9 ([UniProt](#), [ExPASy](#))

Buffer: 0.01 M PBS, pH 7.4, containing 0.05% Proclin-300, 50% glycerol.

Note: THIS PRODUCT IS FOR RESEARCH USE ONLY. NOT FOR USE IN DIAGNOSTIC, THERAPEUTIC OR COSMETIC PROCEDURES. NOT FOR HUMAN OR ANIMAL CONSUMPTION.

For Reference Only