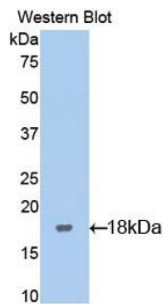
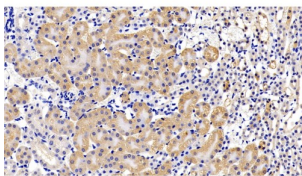


Leukemia Inhibitory Factor Receptor (LIFR) Antibody

Catalogue No.: abx103731



Western blot analysis of recombinant Mouse LIFR.

IHC-P analysis of Mouse Kidney Tissue, with DAB staining, using Rabbit Anti-Mouse LIFR Antibody (20 µg/ml) and HRP-conjugated Goat Anti-Rabbit antibody ([abx400043](#), 2 µg/ml).

Polyclonal Antibody to Leukemia Inhibitory Factor Receptor (LIFR).

Target: Leukemia Inhibitory Factor Receptor (LIFR)**Clonality:** Polyclonal**Reactivity:** Mouse**Tested Applications:** WB, IHC, IF/ICC**Host:** Rabbit**Recommended dilutions:** WB: 0.01-2 µg/ml, IHC: 5-20 µg/ml, IF/ICC: 5-20 µg/ml. Optimal dilutions/concentrations should be determined by the end user.**Conjugation:** Unconjugated**Immunogen:** [abx067764](#) - Recombinant LIFR (Lys151-Gln290) expressed in E. coli**Form:** Liquid**Purification:** Purified by antigen-specific affinity chromatography, followed by Protein A affinity chromatography.**Storage:** Aliquot and store at -20°C. Avoid repeated freeze/thaw cycles.

Datasheet

Version: 2.0.0

Revision date: 12 Mar 2025



UniProt Primary AC: P42703 ([UniProt](#), [ExPASy](#))

KEGG: mmu:16880

String: [10090.ENSMUSP00000126137](#)

Buffer: 0.01 M PBS, pH 7.4, containing 0.05% Proclin-300, 50% glycerol.

Specificity: Cross-reacts with Rat LIFR.

Note: THIS PRODUCT IS FOR RESEARCH USE ONLY. NOT FOR USE IN DIAGNOSTIC, THERAPEUTIC OR COSMETIC PROCEDURES. NOT FOR HUMAN OR ANIMAL CONSUMPTION.

For Reference Only