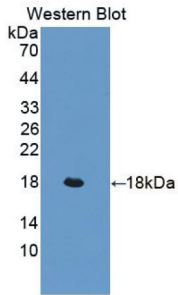
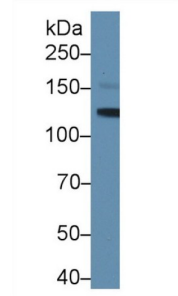


## Leukemia Inhibitory Factor Receptor (LIFR) Antibody

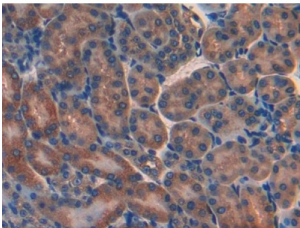
Catalogue No.: abx103732



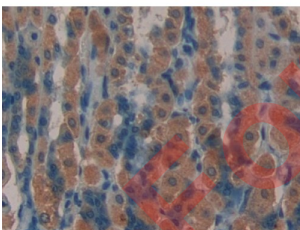
Western blot analysis of recombinant Mouse LIFR.



Western blot analysis of Mouse Serum, using Rabbit Anti-Mouse LIFR Antibody (1 µg/ml) and HRP-conjugated Goat Anti-Rabbit antibody ([abx400043](#), 0.2 µg/ml).



IHC-P analysis of Mouse Kidney Tissue, with DAB staining, using Rabbit Anti-Mouse LIFR Antibody (10 µg/ml) and HRP-conjugated Goat Anti-Rabbit antibody ([abx400043](#), 2 µg/ml).



IHC-P analysis of Mouse Stomach Tissue, with DAB staining, using Rabbit Anti-Mouse LIFR Antibody (1 µg/ml) and HRP-conjugated Goat Anti-Rabbit antibody ([abx400043](#), 0.2 µg/ml).

Polyclonal Antibody to Leukemia Inhibitory Factor Receptor (LIFR).

**Target:** Leukemia Inhibitory Factor Receptor (LIFR)

**Clonality:** Polyclonal

**Reactivity:** Mouse

# Datasheet

Version: 2.0.0  
Revision date: 14 Jan 2025



<b>Tested Applications:</b>	WB, IHC, IF/ICC
<b>Host:</b>	Rabbit
<b>Recommended dilutions:</b>	WB: 0.01-2 µg/ml, IHC: 5-20 µg/ml, IF/ICC: 5-20 µg/ml. Optimal dilutions/concentrations should be determined by the end user.
<b>Conjugation:</b>	Unconjugated
<b>Immunogen:</b>	<a href="#">abx067769</a> - Recombinant LIFR (Thr641-Thr790) expressed in E. coli
<b>Form:</b>	Liquid
<b>Purification:</b>	Purified by antigen-specific affinity chromatography, followed by Protein A affinity chromatography.
<b>Storage:</b>	Aliquot and store at -20°C. Avoid repeated freeze/thaw cycles.
<b>UniProt Primary AC:</b>	P42703 ( <a href="#">UniProt</a> , <a href="#">ExPASy</a> )
<b>KEGG:</b>	mmu:16880
<b>String:</b>	<a href="#">10090.ENSMUSP00000126137</a>
<b>Buffer:</b>	0.01 M PBS, pH 7.4, containing 0.05% Proclin-300, 50% glycerol.
<b>Specificity:</b>	Cross-reacts with Rat LIFR.
<b>Note:</b>	This product is for research use only.

For Reference Only