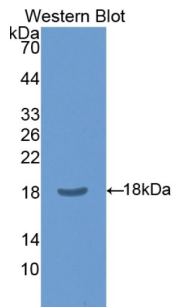
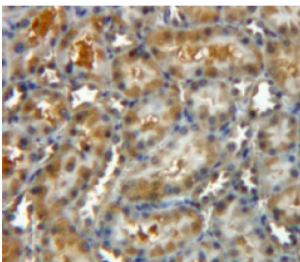


Chloride Intracellular Channel Protein 4 (CLIC4) Antibody

Catalogue No.: abx104150



Western blot analysis of the recombinant protein.



IHC-P analysis of kidney tissue, with DAB staining.

Polyclonal Antibody to Chloride Intracellular Channel Protein 4 (CLIC4).

Target:	Chloride Intracellular Channel Protein 4 (CLIC4)
Clonality:	Polyclonal
Reactivity:	Rat
Tested Applications:	WB, IHC, IF/ICC
Host:	Rabbit
Recommended dilutions:	WB: 0.01-2 µg/ml, IHC: 5-20 µg/ml, IF/ICC: 5-20 µg/ml. Optimal dilutions/concentrations should be determined by the end user.
Conjugation:	Unconjugated
Immunogen:	CLIC4 (Tyr104-Lys253)
Form:	Liquid
Purification:	Purified by antigen-specific affinity chromatography, followed by Protein A affinity chromatography.
Storage:	Aliquot and store at -20°C. Avoid repeated freeze/thaw cycles.

Datasheet

Version: 2.0.0

Revision date: 13 Mar 2025



UniProt Primary AC: Q9Z0W7 ([UniProt](#), [ExPASy](#))

Gene Symbol: CLIC4

GeneID: [83718](#)

KEGG: rno:83718

String: [10116.ENSRNOP00000024464](#)

Buffer: 0.01 M PBS, pH 7.4, containing 0.05% Proclin-300, 50% glycerol.

Note: THIS PRODUCT IS FOR RESEARCH USE ONLY. NOT FOR USE IN DIAGNOSTIC, THERAPEUTIC OR COSMETIC PROCEDURES. NOT FOR HUMAN OR ANIMAL CONSUMPTION.

For Reference Only