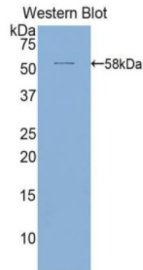
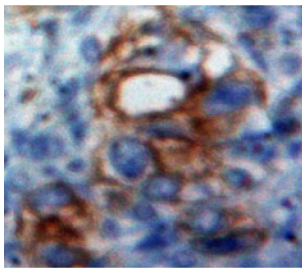


# Activated Leukocyte Cell Adhesion Molecule / CD166 (ALCAM) Antibody

Catalogue No.: abx104256



Western blot analysis of the recombinant protein.



IHC-P analysis of Ovary tissue, with DAB staining.

Polyclonal Antibody to ALCAM.

**Target:** Activated Leukocyte Cell Adhesion Molecule / CD166 (ALCAM)**Clonality:** Polyclonal**Reactivity:** Human**Tested Applications:** WB, IHC, IF/ICC**Host:** Rabbit**Recommended dilutions:** WB: 0.01-2 µg/ml, IHC: 5-20 µg/ml, IF/ICC: 5-20 µg/ml. Optimal dilutions/concentrations should be determined by the end user.**Conjugation:** Unconjugated**Immunogen:** ALCAM (Trp28-Lys527)**Form:** Liquid**Purification:** Purified by antigen-specific affinity chromatography, followed by Protein A affinity chromatography.

# Datasheet

Version: 2.0.0

Revision date: 11 Feb 2025



**Storage:** Aliquot and store at -20°C. Avoid repeated freeze/thaw cycles.

**UniProt Primary AC:** Q13740 ([UniProt](#), [ExPASy](#))

**Buffer:** 0.01 M PBS, pH 7.4, containing 0.05% Proclin-300, 50% glycerol.

**Note:** This product is for research use only.

For Reference Only