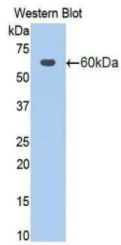
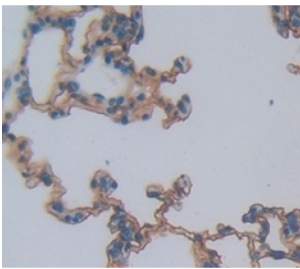


Activated Leukocyte Cell Adhesion Molecule / CD166 (ALCAM) Antibody

Catalogue No.: abx104260



Western blot analysis of the recombinant protein.



IHC-P analysis of Rat Tissue, with DAB staining.

Polyclonal Antibody to ALCAM.

Target:	Activated Leukocyte Cell Adhesion Molecule / CD166 (ALCAM)
Clonality:	Polyclonal
Reactivity:	Rat
Tested Applications:	WB, IHC, IF/ICC
Host:	Rabbit
Recommended dilutions:	WB: 0.01-2 µg/ml, IHC: 5-20 µg/ml, IF/ICC: 5-20 µg/ml. Optimal dilutions/concentrations should be determined by the end user.
Conjugation:	Unconjugated
Immunogen:	ALCAM (Trp28-Lys527)
Form:	Liquid
Purification:	Purified by antigen-specific affinity chromatography, followed by Protein A affinity chromatography.

Datasheet

Version: 4.0.0
Revision date: 12 Mar 2025



- Storage:** Aliquot and store at -20°C. Avoid repeated freeze/thaw cycles.
- Buffer:** 0.01 M PBS, pH 7.4, containing 0.05% Proclin-300, 50% glycerol.
- Note:** THIS PRODUCT IS FOR RESEARCH USE ONLY. NOT FOR USE IN DIAGNOSTIC, THERAPEUTIC OR COSMETIC PROCEDURES. NOT FOR HUMAN OR ANIMAL CONSUMPTION.

For Reference Only