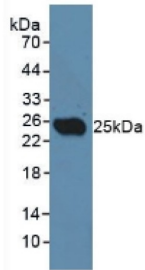
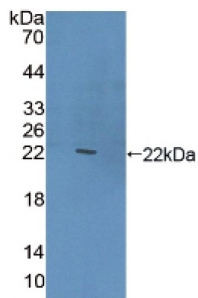


C-Type Lectin Domain Family 10 Member A / CD301 (CLEC10A) Antibody

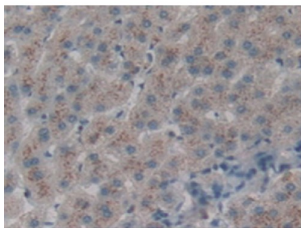
Catalogue No.: abx104270



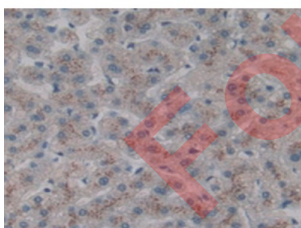
Western blot analysis of Rat Testis Tissue.



Western blot analysis of recombinant Human CLEC10A.



IHC-P analysis of Human Liver Cancer Tissue, with DAB staining.



IHC-P analysis of Human Liver Tissue, with DAB staining.

Polyclonal Antibody to C-Type Lectin Domain Family 10, Member A (CLEC10A).

Target: C-Type Lectin Domain Family 10 Member A / CD301 (CLEC10A)

Clonality: Polyclonal

Datasheet

Version: 2.0.0
Revision date: 03 Dec 2024



Reactivity:	Human
Tested Applications:	WB, IHC, IF/ICC
Host:	Rabbit
Recommended dilutions:	WB: 0.5-2 µg/ml, IHC: 5-20 µg/ml, IF/ICC: 5-20 µg/ml. Optimal dilutions/concentrations should be determined by the end user.
Conjugation:	Unconjugated
Immunogen:	CLEC10A (Thr71-Met239)
Form:	Liquid
Purification:	Purified by antigen-specific affinity chromatography, followed by Protein A affinity chromatography.
Storage:	Aliquot and store at -20°C. Avoid repeated freeze/thaw cycles.
Buffer:	0.01 M PBS, pH 7.4, containing 0.05% Proclin-300, 50% glycerol.
Concentration:	1 mg/ml
Note:	This product is for research use only.

For Reference Only