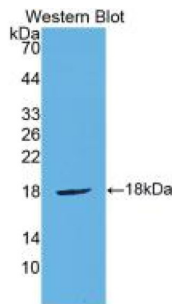


Cytotoxic T-Lymphocyte Associated Antigen 4 (CTLA4) Antibody

Catalogue No.: abx104331



Western blot analysis of recombinant Mouse CTLA4 Protein.

Polyclonal Antibody to Cytotoxic T-Lymphocyte Associated Antigen 4 (CTLA4).

Target:	Cytotoxic T-Lymphocyte Associated Antigen 4 (CTLA4)
Clonality:	Polyclonal
Reactivity:	Mouse
Tested Applications:	WB, IHC, IF/ICC
Host:	Rabbit
Recommended dilutions:	WB: 0.01-2 µg/ml, IHC: 5-20 µg/ml, IF/ICC: 5-20 µg/ml. Optimal dilutions/concentrations should be determined by the end user.
Conjugation:	Unconjugated
Immunogen:	abx066270 - Recombinant CTLA4 (Val45-Ser185) expressed in E. coli
Form:	Liquid
Purification:	Purified by antigen-specific affinity chromatography, followed by Protein A affinity chromatography.
Storage:	Aliquot and store at -20°C. Avoid repeated freeze/thaw cycles.
UniProt Primary AC:	P09793 (UniProt , ExPASy)
Gene Symbol:	CTLA4
GeneID:	12477
KEGG:	mmu:12477

Datasheet

Version: 2.0.0
Revision date: 23 Feb 2025



String: [10090.ENSMUSP00000027164](#)

Buffer: 0.01 M PBS, pH 7.4, containing 0.05% Proclin-300, 50% glycerol.

Concentration: 0.85 mg/ml

Note: This product is for research use only.

For Reference Only