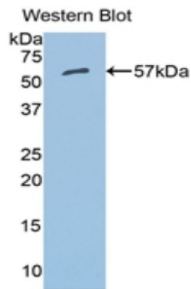
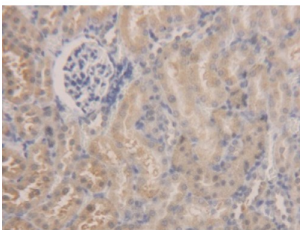


Aldehyde Dehydrogenase 7 Family, Member A1 (ALDH7A1) Antibody

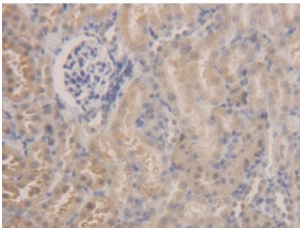
Catalogue No.: abx104358



Western blot analysis of the recombinant protein.



IHC-P analysis of Rat Kidney Tissue, with DAB staining.



IHC-P analysis of Rat Kidney Tissue, with DAB staining.

Polyclonal Antibody to Aldehyde Dehydrogenase 7 Family, Member A1 (ALDH7A1).

Target: Aldehyde Dehydrogenase 7 Family, Member A1 (ALDH7A1)

Clonality: Polyclonal

Reactivity: Rat

Tested Applications: WB, IHC, IF/ICC

Host: Rabbit

Recommended dilutions: WB: 0.01-2 µg/ml, IHC: 5-20 µg/ml, IF/ICC: 5-20 µg/ml. Optimal dilutions/concentrations should be determined by the end user.

Conjugation: Unconjugated

Datasheet

Version: 3.0.0
Revision date: 11 Mar 2025



Immunogen:	ALDH7A1 (Leu28-Gln539)
Form:	Liquid
Purification:	Purified by antigen-specific affinity chromatography, followed by Protein A affinity chromatography.
Storage:	Aliquot and store at -20°C. Avoid repeated freeze/thaw cycles.
Buffer:	0.01 M PBS, pH 7.4, containing 0.05% Proclin-300, 50% glycerol.
Note:	THIS PRODUCT IS FOR RESEARCH USE ONLY. NOT FOR USE IN DIAGNOSTIC, THERAPEUTIC OR COSMETIC PROCEDURES. NOT FOR HUMAN OR ANIMAL CONSUMPTION.

For Reference Only