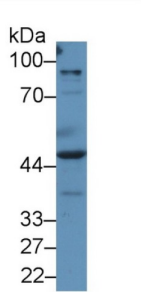
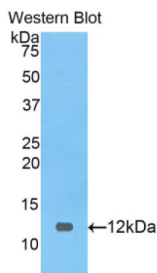


Melanoma Antigen Preferentially Expressed In Tumors (PRAME) Antibody

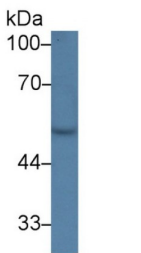
Catalogue No.: abx104373



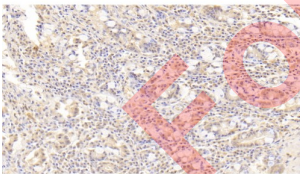
Western blot analysis of Human A549 cell lysate, using Human PRAME Antibody (2 µg/ml) and HRP-conjugated Goat Anti-Rabbit antibody ([abx400043](#), 0.2 µg/ml).



Western blot analysis of the recombinant Human PRAME protein.



WB analysis of Human K562 cell lysate, using Human PRAME Antibody (2 µg/ml) and HRP-conjugated Goat Anti-Rabbit antibody ([abx400043](#), 0.2 µg/ml).



IHC-P analysis of Human small intestine tissue, using Human PRAME Antibody (20 µg/ml).

Polyclonal Antibody to Melanoma Antigen Preferentially Expressed In Tumors (PRAME).

Target: Melanoma Antigen Preferentially Expressed In Tumors (PRAME)

Clonality: Polyclonal

Datasheet

Version: 4.0.0
Revision date: 05 Mar 2025



Reactivity:	Human
Tested Applications:	WB, IHC, IF/ICC
Host:	Rabbit
Recommended dilutions:	WB: 0.01-2 µg/ml, IHC: 5-20 µg/ml, IF/ICC: 5-20 µg/ml. Optimal dilutions/concentrations should be determined by the end user.
Conjugation:	Unconjugated
Immunogen:	abx068652 - Recombinant PRAME (Asn416-Leu502) expressed in E.coli
Isotype:	IgG
Form:	Liquid
Purification:	Purified by antigen-specific affinity chromatography, followed by Protein A affinity chromatography.
Storage:	Aliquot and store at -20°C. Avoid repeated freeze/thaw cycles.
UniProt Primary AC:	P78395 (UniProt , ExPASy)
Gene Symbol:	PRAME
GeneID:	23532
OMIM:	606021
HGNC:	9336
KEGG:	hsa:23532
Ensembl:	ENSG00000185686
String:	9606.ENSP00000445675
Buffer:	0.01 M PBS, pH 7.4, containing 0.05% Proclin-300, 50% glycerol.
Specificity:	Cross-reacts with Pig PRAME.
Concentration:	0.85 mg/ml
Note:	THIS PRODUCT IS FOR RESEARCH USE ONLY. NOT FOR USE IN DIAGNOSTIC, THERAPEUTIC OR COSMETIC PROCEDURES. NOT FOR HUMAN OR ANIMAL CONSUMPTION.