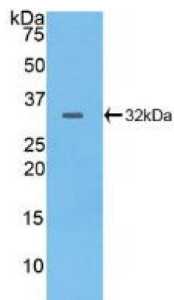


# Datasheet

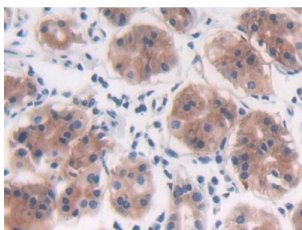
Version: 3.0.0  
Revision date: 11 Feb 2025

## Protein Tyrosine Phosphatase Receptor Type B (PTPRB) Antibody

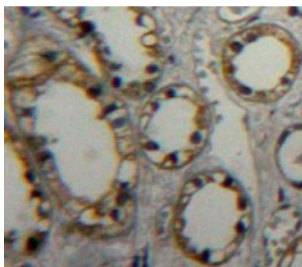
Catalogue No.: abx104375



Western blot analysis of recombinant Human PTPRB.



IHC-P analysis of Human Stomach Tissue, with DAB staining.



IHC-P analysis of Kidney tissue, with DAB staining.

Polyclonal Antibody to Protein Tyrosine Phosphatase Receptor Type B (PTPRB).

**Target:** Protein Tyrosine Phosphatase Receptor Type B (PTPRB)

**Clonality:** Polyclonal

**Reactivity:** Human

**Tested Applications:** WB, IHC, IF/ICC

**Host:** Rabbit

**Recommended dilutions:** WB: 0.01-2 µg/ml, IHC: 5-20 µg/ml, IF/ICC: 5-20 µg/ml. Optimal dilutions/concentrations should be determined by the end user.

**Conjugation:** Unconjugated

# Datasheet

Version: 3.0.0  
Revision date: 11 Feb 2025



<b>Immunogen:</b>	PTPRB (Ala1655-Asp1918)
<b>Form:</b>	Liquid
<b>Purification:</b>	Purified by antigen-specific affinity chromatography, followed by Protein A affinity chromatography.
<b>Storage:</b>	Aliquot and store at -20°C. Avoid repeated freeze/thaw cycles.
<b>Buffer:</b>	0.01 M PBS, pH 7.4, containing 0.05% Proclin-300, 50% glycerol.
<b>Concentration:</b>	0.71 mg/ml
<b>Note:</b>	This product is for research use only.

For Reference Only