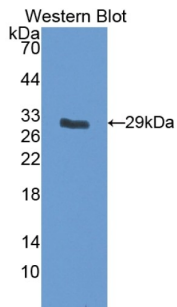
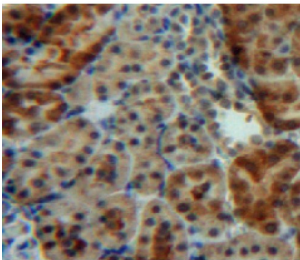


Insulin Like Growth Factor Binding Protein 5 (IGFBP5) Antibody

Catalogue No.: abx104412



Western blot analysis of the recombinant protein.



IHC-P analysis of kidney tissue, with DAB staining.

Polyclonal Antibody to Insulin Like Growth Factor Binding Protein 5 (IGFBP5).

Target:	Insulin Like Growth Factor Binding Protein 5 (IGFBP5)
Clonality:	Polyclonal
Reactivity:	Rat
Tested Applications:	WB, IHC, IF/ICC
Host:	Rabbit
Recommended dilutions:	WB: 0.01-2 µg/ml, IHC: 5-20 µg/ml, IF/ICC: 5-20 µg/ml. Optimal dilutions/concentrations should be determined by the end user.
Conjugation:	Unconjugated
Immunogen:	abx067256 - Recombinant IGFBP5 (His25-Glu271) expressed in E. coli
Form:	Liquid
Purification:	Purified by antigen-specific affinity chromatography, followed by Protein A affinity chromatography.
Storage:	Aliquot and store at -20°C. Avoid repeated freeze/thaw cycles.

Datasheet

Version: 1.0.0

Revision date: 29 Mar 2025



UniProt Primary AC: P24594 ([UniProt](#), [ExPASy](#))

KEGG: rno:25285

String: [10116.ENSRNOP00000023530](#)

Buffer: 0.01 M PBS, pH 7.4, containing 0.05% Proclin-300, 50% glycerol.

Note: THIS PRODUCT IS FOR RESEARCH USE ONLY. NOT FOR USE IN DIAGNOSTIC, THERAPEUTIC OR COSMETIC PROCEDURES. NOT FOR HUMAN OR ANIMAL CONSUMPTION.

For Reference Only