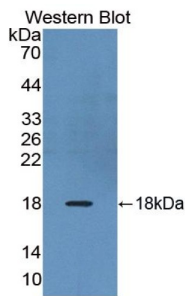
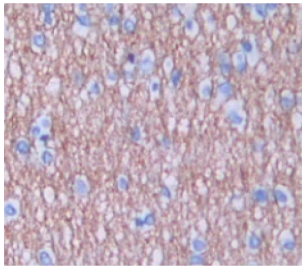


Relaxin/Insulin Like Family Peptide Receptor 1 (RXFP1) Antibody

Catalogue No.: abx104449



Western blot analysis of recombinant Human RXFP1.



IHC-P analysis of Human Brain Tissue, with DAB staining.

Polyclonal Antibody to Relaxin/Insulin Like Family Peptide Receptor 1 (RXFP1).

- Target:** Relaxin/Insulin Like Family Peptide Receptor 1 (RXFP1)
- Clonality:** Polyclonal
- Reactivity:** Human
- Tested Applications:** WB, IHC, IF/ICC
- Host:** Rabbit
- Recommended dilutions:** WB: 0.5-2 µg/ml, IHC: 5-20 µg/ml, IF/ICC: 5-20 µg/ml. Optimal dilutions/concentrations should be determined by the end user.
- Conjugation:** Unconjugated
- Immunogen:** [abx068858](#) - Recombinant RXFP1 (Pro110-Ala259) expressed in E. coli
- Form:** Liquid
- Purification:** Purified by antigen-specific affinity chromatography, followed by Protein A affinity chromatography.
- Storage:** Aliquot and store at -20°C. Avoid repeated freeze/thaw cycles.

Datasheet

Version: 4.0.0
Revision date: 22 Nov 2024



UniProt Primary AC: Q9HBX9 ([UniProt](#), [ExPASy](#))

Gene Symbol: RXFP1

GeneID: [59350](#)

String: [9606.ENSP00000405841](#)

Buffer: 0.01 M PBS, pH 7.4, containing 0.05% Proclin-300, 50% glycerol.

Note: This product is for research use only.

For Reference Only