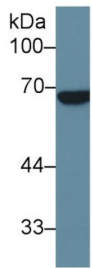
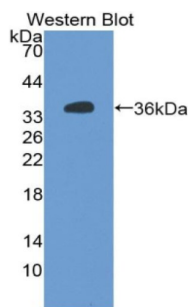


Alkaline Phosphatase, Placental Like Protein 2 (ALPPL2) Antibody

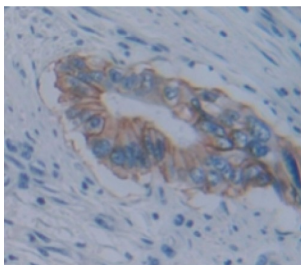
Catalogue No.: abx104464



Western blot analysis of Human Placenta lysate, using Human ALPPL2 Antibody (1 µg/ml) and HRP-conjugated Goat Anti-Rabbit antibody ([abx400043](#), 0.2 µg/ml).



Western blot analysis of the recombinant protein.



IHC-P analysis of Human Tissue, with DAB staining.

Polyclonal Antibody to Alkaline Phosphatase, Placental Like Protein 2 (ALPPL2).

Target: Alkaline Phosphatase, Placental Like Protein 2 (ALPPL2)

Clonality: Polyclonal

Reactivity: Human

Tested Applications: WB, IHC, IF/ICC

Host: Rabbit

Recommended dilutions: WB: 0.01-2 µg/ml, IHC: 5-20 µg/ml, IF/ICC: 5-20 µg/ml. Optimal dilutions/concentrations should be determined by the end user.

Conjugation: Unconjugated

Datasheet

Version: 3.0.0
Revision date: 23 Feb 2025



| | |
|----------------------------|--|
| Immunogen: | ALPPL2 (Ile20-Arg333) |
| Form: | Liquid |
| Purification: | Purified by antigen-specific affinity chromatography, followed by Protein A affinity chromatography. |
| Storage: | Aliquot and store at -20°C. Avoid repeated freeze/thaw cycles. |
| UniProt Primary AC: | P10696 (UniProt , ExPASy) |
| KEGG: | hsa:251 |
| String: | 9606.ENSP00000295453 |
| Buffer: | 0.01 M PBS, pH 7.4, containing 0.05% Proclin-300, 50% glycerol. |
| Note: | This product is for research use only. |

For Reference Only