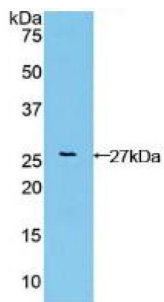
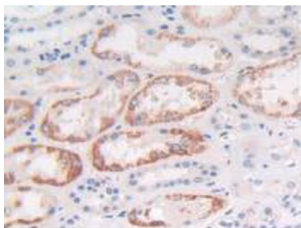


Fibroblast Growth Factor Receptor Like Protein 1 (FGFRL1) Antibody

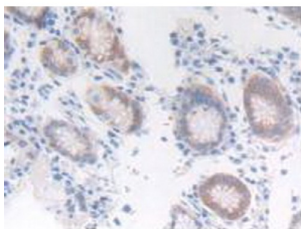
Catalogue No.: abx104527



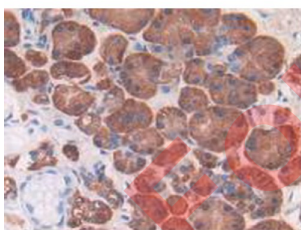
Western blot analysis of recombinant Human FGFRL1.



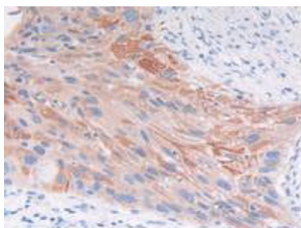
IHC-P analysis of Human Kidney Tissue, with DAB staining.



IHC-P analysis of Human Stomach Tissue, with DAB staining.



IHC-P analysis of Human Pancreas Tissue, with DAB staining.



IHC-P analysis of Human Lung Tissue, with DAB staining.

Datasheet

Version: 3.0.0
Revision date: 11 Feb 2025



Polyclonal Antibody to Fibroblast Growth Factor Receptor Like Protein 1 (FGFRL1).

Target:	Fibroblast Growth Factor Receptor Like Protein 1 (FGFRL1)
Clonality:	Polyclonal
Reactivity:	Human
Tested Applications:	WB, IHC, IF/ICC
Host:	Rabbit
Recommended dilutions:	WB: 0.01-2 µg/ml, IHC: 5-20 µg/ml, IF/ICC: 5-20 µg/ml. Optimal dilutions/concentrations should be determined by the end user.
Conjugation:	Unconjugated
Immunogen:	FGFRL1 (Val168-Pro378)
Form:	Liquid
Purification:	Purified by antigen-specific affinity chromatography, followed by Protein A affinity chromatography.
Storage:	Aliquot and store at -20°C. Avoid repeated freeze/thaw cycles.
UniProt Primary AC:	Q8N441 (UniProt , ExPASy)
KEGG:	hsa:53834
String:	9606.ENSP00000381498
Buffer:	0.01 M PBS, pH 7.4, containing 0.05% Proclin-300, 50% glycerol.
Note:	This product is for research use only.