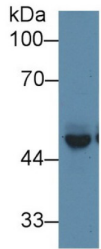
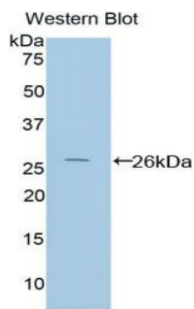


Protein Interacting With Protein Kinase C Alpha 1 (PICK1) Antibody

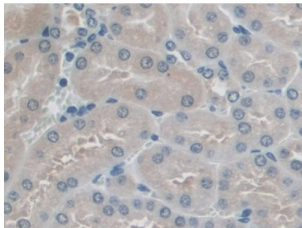
Catalogue No.: abx104548



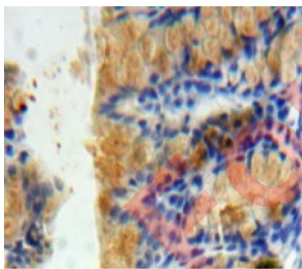
Western blot analysis of Mouse Cerebrum lysate, using Mouse PICK1 Antibody (1 µg/ml) and HRP-conjugated Goat Anti-Rabbit antibody ([abx400043](#), 0.2 µg/ml).



Western blot analysis of the recombinant protein.



IHC-P analysis of Mouse Kidney Tissue, with DAB staining.



IHC-P analysis of Bowels tissue, with DAB staining.

Polyclonal Antibody to Protein Interacting With Protein Kinase C Alpha 1 (PICK1).

Target: Protein Interacting With Protein Kinase C Alpha 1 (PICK1)

Clonality: Polyclonal

Reactivity: Mouse

Datasheet

Version: 3.0.0
Revision date: 13 Mar 2025



Tested Applications:	WB, IHC, IF/ICC
Host:	Rabbit
Recommended dilutions:	WB: 0.01-2 µg/ml, IHC: 5-20 µg/ml, IF/ICC: 5-20 µg/ml. Optimal dilutions/concentrations should be determined by the end user.
Conjugation:	Unconjugated
Immunogen:	PICK1 (Thr24-Lys229)
Form:	Liquid
Purification:	Purified by antigen-specific affinity chromatography, followed by Protein A affinity chromatography.
Storage:	Aliquot and store at -20°C. Avoid repeated freeze/thaw cycles.
UniProt Primary AC:	Q62083 (UniProt , ExPASy)
String:	10090.ENSMUSP00000128126
Buffer:	0.01 M PBS, pH 7.4, containing 0.05% Proclin-300, 50% glycerol.
Note:	THIS PRODUCT IS FOR RESEARCH USE ONLY. NOT FOR USE IN DIAGNOSTIC, THERAPEUTIC OR COSMETIC PROCEDURES. NOT FOR HUMAN OR ANIMAL CONSUMPTION.

For Reference Only