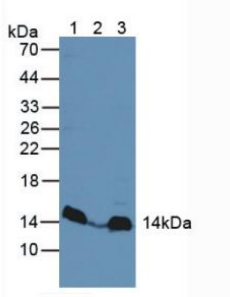
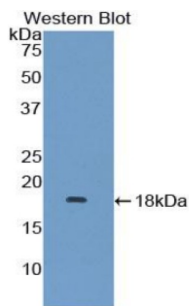


# Ragulator Complex Protein LAMTOR3 / MAPKSP1 (LAMTOR3) Antibody

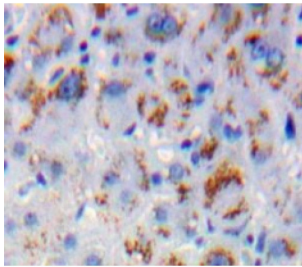
Catalogue No.: abx104617



Western blot analysis of (1) Rat Heart Tissue, (2) Human Liver Tissue and (3) Mouse Liver Tissue.



Western blot analysis of recombinant Human MAPKSP1.



IHC-P analysis of Liver tissue, with DAB staining.

Polyclonal Antibody to Mitogen Activated Protein Kinase Scaffold Protein 1 (MAPKSP1).

**Target:** Ragulator Complex Protein LAMTOR3 / MAPKSP1 (LAMTOR3)

**Clonality:** Polyclonal

**Reactivity:** Human

**Tested Applications:** WB, IHC, IF/ICC

**Host:** Rabbit

**Recommended dilutions:** WB: 1-5 µg/ml, IHC: 5-20 µg/ml, IF/ICC: 5-20 µg/ml. Optimal dilutions/concentrations should be determined by the end user.

# Datasheet

Version: 2.0.0  
Revision date: 27 Dec 2024



<b>Conjugation:</b>	Unconjugated
<b>Immunogen:</b>	MAPKSP1 (Met1-Ser124)
<b>Form:</b>	Liquid
<b>Purification:</b>	Purified by antigen-specific affinity chromatography, followed by Protein A affinity chromatography.
<b>Storage:</b>	Aliquot and store at -20°C. Avoid repeated freeze/thaw cycles.
<b>Buffer:</b>	0.01 M PBS, pH 7.4, containing 0.05% Proclin-300, 50% glycerol.
<b>Note:</b>	This product is for research use only.

For Reference Only