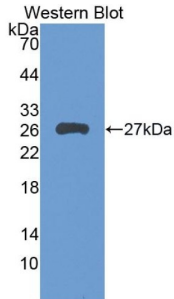


# Leukocyte Immunoglobulin Like Receptor Subfamily B, Member 3 (LILRB3) Antibody

Catalogue No.: abx104719



Western blot analysis of recombinant Human LILRB3 Protein.

Polyclonal Antibody to Leukocyte Immunoglobulin Like Receptor Subfamily B, Member 3 (LILRB3).

<b>Target:</b>	Leukocyte Immunoglobulin Like Receptor Subfamily B, Member 3 (LILRB3)
<b>Clonality:</b>	Polyclonal
<b>Reactivity:</b>	Human
<b>Tested Applications:</b>	WB, IHC, IF/ICC
<b>Host:</b>	Rabbit
<b>Recommended dilutions:</b>	WB: 0.01-2 µg/ml, IHC: 5-20 µg/ml, IF/ICC: 5-20 µg/ml. Optimal dilutions/concentrations should be determined by the end user.
<b>Conjugation:</b>	Unconjugated
<b>Immunogen:</b>	<a href="#">abx067779</a> - Recombinant LILRB3 (Leu217-Leu407) expressed in E. coli
<b>Form:</b>	Liquid
<b>Purification:</b>	Purified by antigen-specific affinity chromatography, followed by Protein A affinity chromatography.
<b>Storage:</b>	Aliquot and store at -20°C. Avoid repeated freeze/thaw cycles.
<b>UniProt Primary AC:</b>	O75022 ( <a href="#">UniProt</a> , <a href="#">ExpASY</a> )
<b>KEGG:</b>	hsa:102725035, hsa:107987462
<b>String:</b>	<a href="#">9606.ENSP00000245620</a>

# Datasheet

Version: 3.0.0  
Revision date: 15 Jan 2025



**Buffer:** 0.01 M PBS, pH 7.4, containing 0.05% Proclin-300, 50% glycerol.

**Specificity:** Cross-reacts with Mouse and Rat LILRB3.

**Concentration:** 0.75 mg/ml

**Note:** This product is for research use only.

For Reference Only