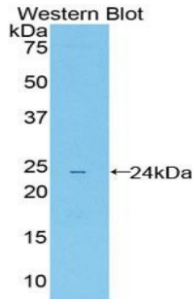
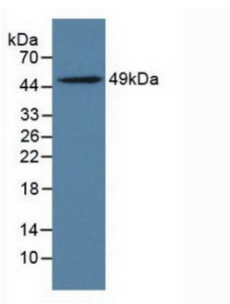


Leukocyte Immunoglobulin Like Receptor Subfamily B, Member 4 (LILRB4) Antibody

Catalogue No.: abx104721



Western blot analysis of recombinant Mouse LILRB4.



Western blot analysis of Rat Adrenal Gland Tissue.

Polyclonal Antibody to Leukocyte Immunoglobulin Like Receptor Subfamily B, Member 4 (LILRB4).

Target:	Leukocyte Immunoglobulin Like Receptor Subfamily B, Member 4 (LILRB4)
Clonality:	Polyclonal
Reactivity:	Mouse
Tested Applications:	WB, IHC, IF/ICC
Host:	Rabbit
Recommended dilutions:	WB: 0.01-2 µg/ml, IHC: 5-20 µg/ml, IF/ICC: 5-20 µg/ml. Optimal dilutions/concentrations should be determined by the end user.
Conjugation:	Unconjugated
Immunogen:	abx067781 - Recombinant LILRB4 (Gly24-Val206) expressed in E. coli
Isotype:	IgG
Form:	Liquid

Datasheet

Version: 2.0.0
Revision date: 06 Feb 2025



Purification:	Purified by antigen-specific affinity chromatography, followed by Protein A affinity chromatography.
Storage:	Aliquot and store at -20°C. Avoid repeated freeze/thaw cycles.
UniProt Primary AC:	Q64281 (UniProt , ExPASy)
KEGG:	mmu:14728
String:	10090.ENSMUSP00000101121
Buffer:	0.01 M PBS, pH 7.4, containing 0.05% Proclin-300, 50% glycerol.
Specificity:	Cross-reacts with Rat LILRB4.
Concentration:	0.61 mg/ml
Note:	This product is for research use only.

For Reference Only