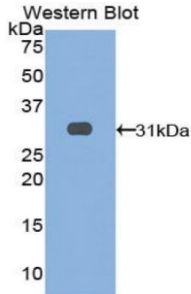
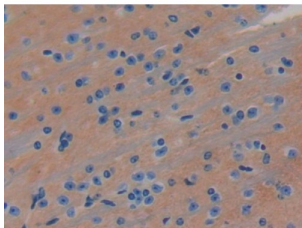


Leucine Rich Repeats And Immunoglobulin Like Domains Protein 3 (LRIG3) Antibody

Catalogue No.: abx104731



Western blot analysis of the recombinant protein.



IHC-P analysis of Mouse Brain Tissue, with DAB staining.

Polyclonal Antibody to Leucine Rich Repeats And Immunoglobulin Like Domains Protein 3 (LRIG3).

- Target:** Leucine Rich Repeats And Immunoglobulin Like Domains Protein 3 (LRIG3)
- Clonality:** Polyclonal
- Reactivity:** Mouse
- Tested Applications:** WB, IHC, IF/ICC
- Host:** Rabbit
- Recommended dilutions:** WB: 0.01-2 µg/ml, IHC: 5-20 µg/ml, IF/ICC: 5-20 µg/ml. Optimal dilutions/concentrations should be determined by the end user.
- Conjugation:** Unconjugated
- Immunogen:** [abx067760](#) - Recombinant LRIG3 (Asp866-Cys1110) expressed in E. coli
- Form:** Liquid
- Purification:** Purified by antigen-specific affinity chromatography, followed by Protein A affinity chromatography.

Datasheet

Version: 5.0.0
Revision date: 13 Mar 2025



Storage: Aliquot and store at -20°C. Avoid repeated freeze/thaw cycles.

UniProt Primary AC: Q6P1C6 ([UniProt](#), [ExPASy](#))

KEGG: mmu:320398

String: [10090.ENSMUSP00000074360](#)

Buffer: 0.01 M PBS, pH 7.4, containing 0.05% Proclin-300, 50% glycerol.

Note: THIS PRODUCT IS FOR RESEARCH USE ONLY. NOT FOR USE IN DIAGNOSTIC, THERAPEUTIC OR COSMETIC PROCEDURES. NOT FOR HUMAN OR ANIMAL CONSUMPTION.

For Reference Only