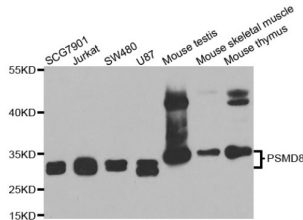
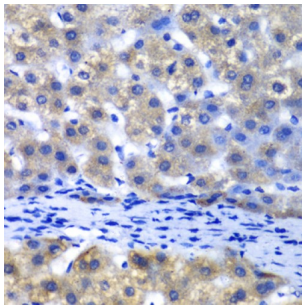


26S Proteasome Non-ATPase Regulatory Subunit 8 (PSMD8) Antibody

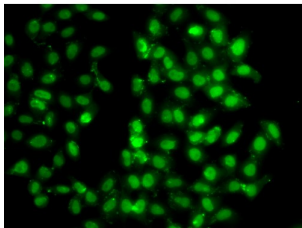
Catalogue No.: abx005277



Western blot analysis of extracts of various cell lines, using PSMD8 antibody (abx005277) at 1/1000 dilution.



Immunohistochemistry of paraffin-embedded human liver injury using PSMD8 antibody (abx005277) at dilution of 1/100 (40x lens).



Immunofluorescence analysis of U2OS cells using PSMD8 antibody (abx005277).

PSMD8 Antibody is a Rabbit Polyclonal antibody against PSMD8. The 26S proteasome is a multicatalytic proteinase complex with a highly ordered structure composed of 2 complexes, a 20S core and a 19S regulator. The 20S core is composed of 4 rings of 28 non-identical subunits; 2 rings are composed of 7 alpha subunits and 2 rings are composed of 7 beta subunits. The 19S regulator is composed of a base, which contains 6 ATPase subunits and 2 non-ATPase subunits, and a lid, which contains up to 10 non-ATPase subunits. Proteasomes are distributed throughout eukaryotic cells at a high concentration and cleave peptides in an ATP/ubiquitin-dependent process in a non-lysosomal pathway. An essential function of a modified proteasome, the immunoproteasome, is the processing of class I MHC peptides. This gene encodes a non-ATPase subunit of the 19S regulator. A pseudogene has been identified on chromosome 1.

Target: 26S Proteasome Non-ATPase Regulatory Subunit 8 (PSMD8)

Clonality: Polyclonal

Reactivity: Human, Mouse, Rat

Tested Applications: WB, IF/ICC

Datasheet

Version: 1.0.0
Revision date: 22 Dec 2024



Host:	Rabbit
Recommended dilutions:	WB: 1/500 - 1/2000, IF/ICC: 1/50 - 1/200. Optimal dilutions/concentrations should be determined by the end user.
Conjugation:	Unconjugated
Immunogen:	Recombinant fusion protein containing a sequence corresponding to amino acids 101-350 of human PSMD8.
Isotype:	IgG
Form:	Liquid
Purification:	Purified by affinity chromatography.
Storage:	Aliquot and store at -20°C. Avoid repeated freeze/thaw cycles.
UniProt Primary AC:	P48556 (UniProt , ExpASY)
Gene Symbol:	PSMD8
GeneID:	5714
NCBI Accession:	NP_002803.2
KEGG:	hsa:5714
String:	9606.ENSP00000215071
Molecular Weight:	Calculated MW: 40 kDa Observed MW: 30-35 kDa
Buffer:	PBS, pH 7.3, containing 0.02% sodium azide, 50% glycerol.
Concentration:	> 0.2 mg/ml
Note:	This product is for research use only.