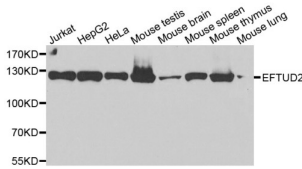
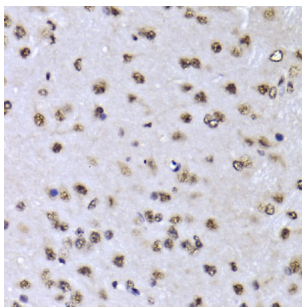


Elongation Factor Tu GTP-Binding Domain-Containing Protein 2 (EFTUD2) Antibody

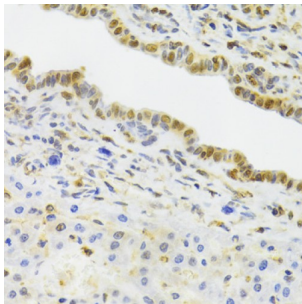
Catalogue No.: abx005330



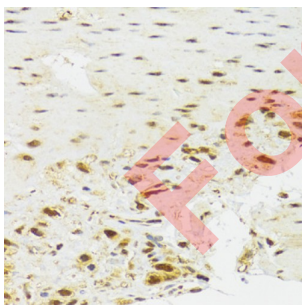
Western blot analysis of extracts of various cell lines, using EFTUD2 antibody (abx005330) at 1/2000 dilution.



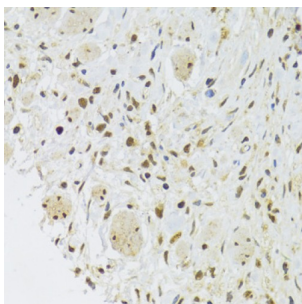
Immunohistochemistry of paraffin-embedded mouse brain using EFTUD2 Antibody (abx005330) at dilution of 1/100 (40x lens).



Immunohistochemistry of paraffin-embedded rat liver using EFTUD2 Antibody (abx005330) at dilution of 1/100 (40x lens).



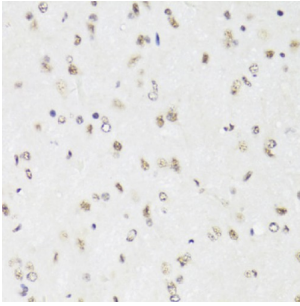
Immunohistochemistry of paraffin-embedded human stomach using EFTUD2 Antibody (abx005330) at dilution of 1/100 (40x lens).



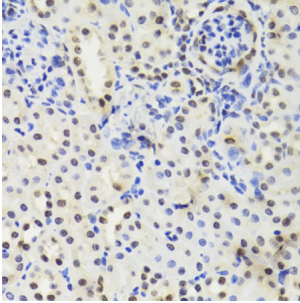
Immunohistochemistry of paraffin-embedded human gastric cancer using EFTUD2 Antibody (abx005330) at dilution of 1/100 (40x lens).

Datasheet

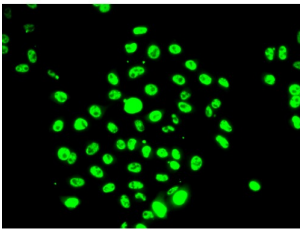
Version: 3.0.0
Revision date: 28 Nov 2024



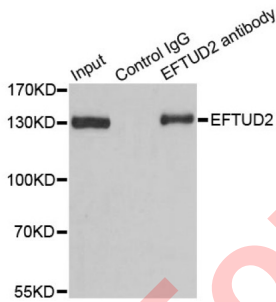
Immunohistochemistry of paraffin-embedded mouse brain using EFTUD2 Antibody (abx005330) at dilution of 1/100 (40x lens).



Immunohistochemistry of paraffin-embedded mouse kidney using EFTUD2 Antibody (abx005330) at dilution of 1/100 (40x lens).



Immunofluorescence analysis of U2OS cells using EFTUD2 antibody (abx005330).



Immunoprecipitation analysis of 100 µg extracts of 293T cells using 3 µg EFTUD2 antibody (abx005330). Western blot was performed from the immunoprecipitate using EFTUD2 antibody (abx005330) at a dilution of 1/1000.

EFTUD2 Antibody is a Rabbit Polyclonal antibody against EFTUD2. This gene encodes a GTPase which is a component of the spliceosome complex which processes precursor mRNAs to produce mature mRNAs. Mutations in this gene are associated with mandibulofacial dysostosis with microcephaly. Multiple transcript variants encoding different isoforms have been found for this gene.

Target: Elongation Factor Tu GTP-Binding Domain-Containing Protein 2 (EFTUD2)

Clonality: Polyclonal

Reactivity: Human, Mouse, Rat

Datasheet

Version: 3.0.0
Revision date: 28 Nov 2024



Tested Applications:	WB, IHC, IF/ICC, IP
Host:	Rabbit
Recommended dilutions:	WB: 1/500 - 1/1000, IHC-P: 1/50 - 1/200, IF/ICC: 1/50 - 1/100, IP: 0.5-4 µg/200-400 µg whole cell extracts. Not tested in IHC-F. Optimal dilutions/concentrations should be determined by the end user.
Conjugation:	Unconjugated
Immunogen:	Recombinant fusion protein containing a sequence corresponding to amino acids 1-205 of human EFTUD2.
Isotype:	IgG
Form:	Liquid
Purification:	Purified by affinity chromatography.
Storage:	Aliquot and store at -20°C. Avoid repeated freeze/thaw cycles.
UniProt Primary AC:	Q15029 (UniProt , ExPASy)
Gene Symbol:	EFTUD2
GeneID:	9343
NCBI Accession:	NP_004238.3
KEGG:	hsa:9343
String:	9606.ENSP00000392094
Molecular Weight:	Calculated MW: 109 kDa Observed MW: 130 kDa
Buffer:	PBS, pH 7.3, containing 0.02% sodium azide, 50% glycerol.
Concentration:	> 0.2 mg/ml
Note:	This product is for research use only.