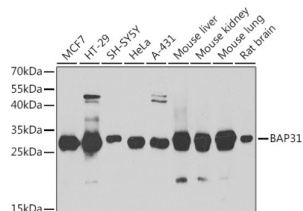
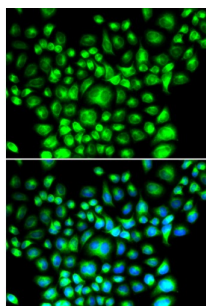


## B-Cell Receptor-Associated Protein 31 (BCAP31) Antibody

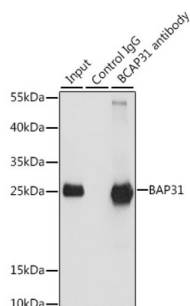
Catalogue No.: abx005340



Western blot analysis of various lysates using BAP31 Antibody at 1/1000 dilution. Secondary antibody: HRP-conjugated Goat anti-Rabbit IgG (H+L) at 1/10000 dilution. Lysates/proteins: 25 µg per lane. Blocking buffer: 3% nonfat dry milk in TBST. Exposure time: 10s.



Immunofluorescence analysis of U2OS cells using BAP31 Antibody. Secondary antibody: Cy3-conjugated Goat anti-Rabbit IgG (H+L) at 1/500 dilution. Blue: DAPI for nuclear staining.



Immunoprecipitation analysis of 200 µg extracts of HeLa cells, using 3 µg BAP31 antibody. Western blot was performed from the immunoprecipitate using BAP31 antibody at a dilution of 1/1000.

BCAP31 Antibody is a Rabbit Polyclonal antibody against BCAP31. This gene encodes a member of the B-cell receptor associated protein 31 superfamily. The encoded protein is a multi-pass transmembrane protein of the endoplasmic reticulum that is involved in the anterograde transport of membrane proteins from the endoplasmic reticulum to the Golgi and in caspase 8-mediated apoptosis. Microdeletions in this gene are associated with contiguous ABCD1/DXS1375E deletion syndrome (CADD5), a neonatal disorder. Alternative splicing of this gene results in multiple transcript variants. Two related pseudogenes have been identified on chromosome 16.

**Target:** B-Cell Receptor-Associated Protein 31 (BCAP31)

**Clonality:** Polyclonal

**Reactivity:** Human, Mouse, Rat

**Tested Applications:** ELISA, WB, IF/ICC, IP

**Host:** Rabbit

# Datasheet

Version: 2.0.0  
Revision date: 23 Apr 2025



**Recommended dilutions:** ELISA: 1 µg/ml, WB: 1/500 - 1/2000, IF/ICC: 1/50 - 1/100, IP: 0.5 µg - 4 µg antibody per 200 µg - 400 µg extracts of whole cells. Optimal dilutions/concentrations should be determined by the end user.

**Conjugation:** Unconjugated

**Immunogen:** Recombinant fusion protein containing a sequence corresponding to amino acids 127-246 of human BAP31.

**Isotype:** IgG

**Form:** Liquid

**Purification:** Purified by affinity chromatography.

**Storage:** Aliquot and store at -20°C. Avoid repeated freeze/thaw cycles.

**UniProt Primary AC:** P51572 ([UniProt](#), [ExPASy](#))

**Gene Symbol:** BCAP31

**GeneID:** [10134](#)

**NCBI Accession:** NP\_001243376.1

**KEGG:** hsa:10134

**String:** [9606.ENSP00000392330](#)

**Molecular Weight:** Calculated MW: 28 kDa  
Observed MW: 28 kDa

**Buffer:** PBS, pH 7.3, containing 0.02% sodium azide, 50% glycerol.

**Concentration:** > 0.2 mg/ml

**Note:** THIS PRODUCT IS FOR RESEARCH USE ONLY. NOT FOR USE IN DIAGNOSTIC, THERAPEUTIC OR COSMETIC PROCEDURES. NOT FOR HUMAN OR ANIMAL CONSUMPTION.