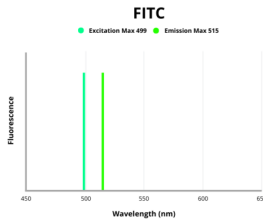


Beta Actin (ACTB) Antibody (FITC)

Catalogue No.: abx106505



Fluorescence emission spectra of FITC.

Actin, cytoplasmic 1 Antibody (FITC) is a Rabbit Polyclonal antibody against Actin, cytoplasmic 1 conjugated to FITC.

Target: Beta Actin (ACTB)

Clonality: Polyclonal

Reactivity: Human

Host: Rabbit

Recommended dilutions: Optimal dilutions/concentrations should be determined by the end user.

Conjugation: FITC

Excitation/Emission: 499/515

Laser Line: 488

Immunogen: Recombinant human Actin, cytoplasmic 1 protein (102-375AA).

Isotype: IgG

Form: Liquid

Purity: > 95%

Purification: Purified by Protein G.

Storage: Aliquot and store at -20°C. Avoid exposure to light. Avoid repeated freeze/thaw cycles.

UniProt Primary AC: P60709 ([UniProt](#), [ExpASY](#))

Datasheet

Version: 1.0.0
Revision date: 03 Dec 2024



Gene Symbol: ACTB

GeneID: [60](#)

OMIM: [102630](#)

KEGG: hsa:60

String: [9606.ENSP00000349960](#)

Buffer: 0.01 M PBS, pH 7.4, 0.03% Proclin-300 and 50% Glycerol.

Note: This product is for research use only.

For Reference Only