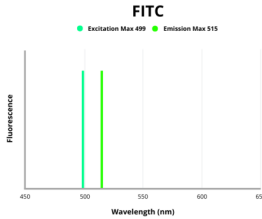


Actin Related Protein 2/3 Complex Subunit 3 (ARPC3) Antibody (FITC)

Catalogue No.: abx106509



Fluorescence emission spectra of FITC.

Actin-related protein 2/3 complex subunit 3 Antibody (FITC) is a Rabbit Polyclonal antibody against Actin-related protein 2/3 complex subunit 3 conjugated to FITC.

Target:	Actin Related Protein 2/3 Complex Subunit 3 (ARPC3)
Clonality:	Polyclonal
Reactivity:	Human
Host:	Rabbit
Recommended dilutions:	Optimal dilutions/concentrations should be determined by the end user.
Conjugation:	FITC
Excitation/Emission:	499/515
Laser Line:	488
Immunogen:	Recombinant human Actin-related protein 2/3 complex subunit 3 protein (2-175AA).
Isotype:	IgG
Form:	Liquid
Purity:	> 95%
Purification:	Purified by Protein G.
Storage:	Aliquot and store at -20°C. Avoid exposure to light. Avoid repeated freeze/thaw cycles.

Datasheet

Version: 1.0.0

Revision date: 02 Dec 2024



UniProt Primary AC: O15145 ([UniProt](#), [ExpASY](#))

Gene Symbol: ARPC3

GeneID: [10094](#)

OMIM: [604225](#)

KEGG: hsa:10094

String: [9606.ENSP00000228825](#)

Buffer: 0.01 M PBS, pH 7.4, 0.03% Proclin-300 and 50% Glycerol.

Note: This product is for research use only.

For Reference Only