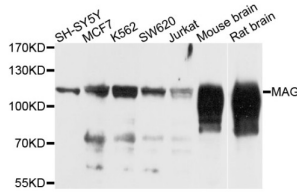


Myelin Associated Glycoprotein (MAG) Antibody

Catalogue No.: abx005421



Western blot analysis of extracts of various cell lines, using MAG antibody (abx005421) at 1/1000 dilution.

MAG Antibody is a Rabbit Polyclonal antibody against MAG. The protein encoded by this gene is a type I membrane protein and member of the immunoglobulin superfamily. It is thought to be involved in the process of myelination. It is a lectin that binds to sialylated glycoconjugates and mediates certain myelin-neuron cell-cell interactions. Three alternatively spliced transcripts encoding different isoforms have been described for this gene.

Target:	Myelin Associated Glycoprotein (MAG)
Clonality:	Polyclonal
Reactivity:	Human, Mouse, Rat
Tested Applications:	WB
Host:	Rabbit
Recommended dilutions:	WB: 1/500 - 1/3000. Optimal dilutions/concentrations should be determined by the end user.
Conjugation:	Unconjugated
Immunogen:	Recombinant fusion protein containing a sequence corresponding to amino acids 20-220 of human MAG.
Isotype:	IgG
Form:	Liquid
Purification:	Purified by affinity chromatography.
Storage:	Aliquot and store at -20°C. Avoid repeated freeze/thaw cycles.
UniProt Primary AC:	P20916 (UniProt , ExPASy)
Gene Symbol:	MAG

Datasheet

Version: 2.0.0
Revision date: 09 Nov 2024



GeneID: [4099](#)

KEGG: hsa:4099

String: [9606.ENSP00000376048](#)

Molecular Weight: Calculated MW: 69 kDa
Observed MW: 120 kDa

Buffer: PBS, pH 7.3, containing 0.02% sodium azide, 50% glycerol.

Concentration: > 0.2 mg/ml

Note: This product is for research use only.

For Reference Only