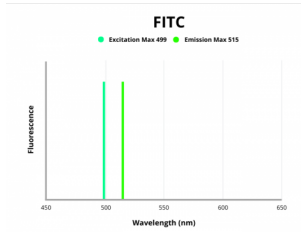


Interleukin 1 Receptor Antagonist (IL1RN) Antibody (FITC)

Catalogue No.: abx107000



Fluorescence emission spectra of FITC.

Interleukin-1 receptor antagonist Antibody (FITC) is a Rabbit Polyclonal antibody against Interleukin-1 receptor antagonist conjugated to FITC.

Target: Interleukin 1 Receptor Antagonist (IL1RN)

Clonality: Polyclonal

Reactivity: Human

Host: Rabbit

Recommended dilutions: Optimal dilutions/concentrations should be determined by the end user.

Conjugation: FITC

Excitation/Emission: 499/515

Laser Line: 488

Immunogen: Recombinant human Interleukin-1 receptor antagonist protein (26-177 AA).

Isotype: IgG

Form: Liquid

Purity: > 95%

Purification: Purified by Protein G.

Storage: Aliquot and store at -20°C. Avoid exposure to light. Avoid repeated freeze/thaw cycles.

Datasheet

Version: 1.0.0
Revision date: 16 Jul 2024



UniProt Primary AC: P18510 ([UniProt](#), [ExPASy](#))

Gene Symbol: IL1RN

GeneID: [3557](#)

OMIM: [147679](#)

NCBI Accession: NP_000568.1, NM_000577.4

HGNC: 6000

KEGG: hsa:3557

Ensembl: ENSG00000136689

String: [9606.ENSP00000259206](#)

Buffer: 0.01 M PBS, pH 7.4, 0.03% Proclin-300 and 50% Glycerol.

Note: This product is for research use only.

For Reference Only